

Industry Status: Transportation

1 week 11/29/23 to 12/06/23								
9Weakest	8VWeak	7Weaker	6Weak	5Avg	4Strong	3Stronger	2VStrong	1Strongest
.	.	.	.	83 TRANSPORT
.	.	.	.	11 AirDelv/Frt	.	.	.	2 Air Services
.	.	4 Major Airlines->	4 Major Airlines->	4 Major Airlines->
.	8 Railroads->	8 Railroads->	.	.
.	.	.	9 Reg'l Airlines->	9 Reg'l Airlines->
.	.	.	.	<-Shipping 34	<-Shipping 34	.	.	.
.	.	.	15 Trucking
.
.

December 06, 2023

UNCHANGED at AVERAGE strength rating
(5th strongest of 9 levels)
previous move was UP

Shipping weakened, Major/Regional Airlines strengthened, HA +209% 1 week

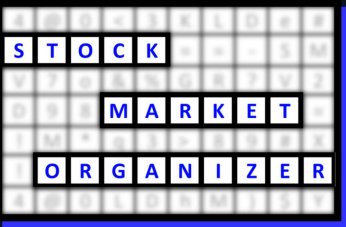


Table of Contents

1	1. INDUSTRY OVERVIEW	
		1A. Performance
		1B. Background
2	2. SUB-INDUSTRIES AND STOCK DETAIL	
		2A. Sub-Industries Overview
		2B. Sub-Industries 10-Week Strengthening Analysis
		2C. Stocks 1 Week Strongest and Weakest
5	3. STRENGTH BY LOOKBACK PERIOD (with Best/Worst stocks)	
		3A. Lookback 3 Months
		3B. Lookback 4 weeks
		3C. Lookback 1 Week

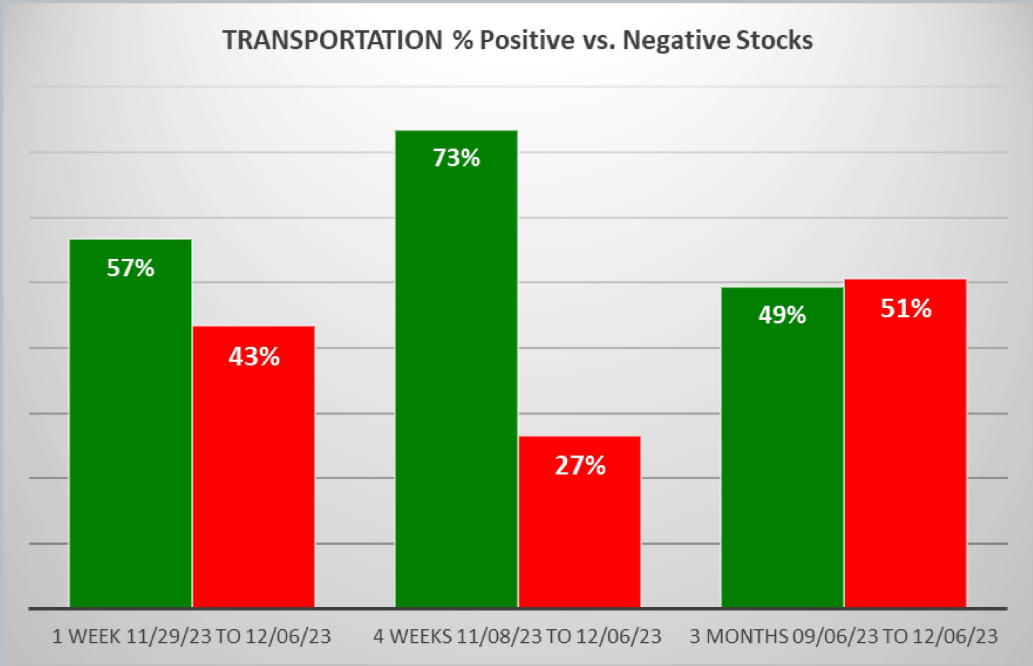
1. INDUSTRY OVERVIEW

1A. Performance

Past 10 Weeks Strengthening/Weakening week-by-week, per the following chart:

9Weakest	8VWeak	7Weaker	6Weak	5Avg	4Strong	3Stronger	2VStrong	1Strongest	Period
.	.	.	.	83 TRANSPORT	7 Days - 11/29/23 to 12/06/23
.	.	.	.	83 TRANSPORT	7 Days - 11/22/23 to 11/29/23
.	.	.	.	83 TRANSPORT	7 Days - 11/15/23 to 11/22/23
.	.	.	83 TRANSPORT->	83 TRANSPORT->	7 Days - 11/08/23 to 11/15/23
.	.	.	83 TRANSPORT	7 Days - 11/01/23 to 11/08/23
.	.	.	83 TRANSPORT	7 Days - 10/25/23 to 11/01/23
.	.	.	<-TRANSPORT 83	<-TRANSPORT 83	7 Days - 10/18/23 to 10/25/23
.	.	.	.	83 TRANSPORT	7 Days - 10/11/23 to 10/18/23
.	.	.	83 TRANSPORT->	83 TRANSPORT->	7 Days - 10/04/23 to 10/11/23
.	.	.	<-TRANSPORT 83	<-TRANSPORT 83	7 Days - 09/27/23 to 10/04/23

Mixed/WEAKENING 1 Week vs. Mid- and Longer-Term // 1 week positive/negative stocks ratio is LOWER than 4 weeks but HIGHER than 3 Months, per the following chart:



1B. Background

Largest of 7 sub-industries (83 stocks, average 12):

- * Shipping (34 stocks)
- * Trucking (15 stocks)
- * Air Delivery & Freight Service (11 stocks)
- * Regional Airlines (9 stocks)

Top 10 by Market Capitalization:

UNP/Union Pacific Corp, UPS/United Parcel Service Inc, CNI/Canadian Natl Railway, CP/Canadian Pacific Railway Ltd, FDX/Fedex Corp, CSX/Csx Corp, NSC/Norfolk Southern Corp, ODFL/Old Dominion Freight Lines Inc, DAL/Delta Air Lines Inc, WAB/Wabtec Corporation

2. SUB-INDUSTRIES AND STOCKS DETAIL

2A. Sub-Industries Overview

Strengthened: 3/7 sub-industries

Weakened: 1/7 sub-industries

STRONGEST at Strongest rating/1st strongest of 9 levels:

- * Air Services (2 stocks)

WEAKEST at Weak rating/6th strongest of 9 levels:

- * Trucking (15 stocks)

2B. Sub-Industries 10-Week Strengthening Analysis

What: recent week-by-week strength changes for the industry and its sub-industries
Why: objective measurement of strengthening and weakening enabling comparison within and across industries and sub-industries

INDUSTRY CURRENT PERIOD SUMMARY										1 week 11/29/23 to 12/06/23									
Length - Begin/End	Industry/Sub-Industry	Period	#	Min	Avg	Max	Status	2Weakest	8VWeak	7Weaker	6Weak	5Avg	4Strong	3Stronger	2VStrong	1Strongest			
7 Days - 11/29/23 to 12/06/23	TRANSPORTATION	Period 1 of 10 (Current)	83	-1%	3%	209%	Strengthened					83 TRANSPORT							
7 Days - 11/29/23 to 12/06/23	TRANSPORTATION - Air Delivery & Freight Service	Period 1 of 10 (Current)	11	-3%	1%	8%	Strengthened					11 AirDelv/Frt							
7 Days - 11/29/23 to 12/06/23	TRANSPORTATION - Air Services	Period 1 of 10 (Current)	2	1%	3%	-3%	Unchanged									2 Air Services			
7 Days - 11/29/23 to 12/06/23	TRANSPORTATION - Major Airlines	Period 1 of 10 (Current)	4	4%	8%	11%	Strengthened					4 Major Airlines->	4 Major Airlines->	4 Major Airlines->					
7 Days - 11/29/23 to 12/06/23	TRANSPORTATION - Railroads	Period 1 of 10 (Current)	8	3%	6%	6%	Strengthened							8 Railroads->	8 Railroads->				
7 Days - 11/29/23 to 12/06/23	TRANSPORTATION - Regional Airlines	Period 1 of 10 (Current)	9	7%	25%	209%	Strengthened					9 Reg'l Airlines->	9 Reg'l Airlines->						
7 Days - 11/29/23 to 12/06/23	TRANSPORTATION - Shipping	Period 1 of 10 (Current)	34	-1%	-1%	5%	Weakened							<-Shipping 34	<-Shipping 34				
7 Days - 11/29/23 to 12/06/23	TRANSPORTATION - Trucking	Period 1 of 10 (Current)	15	-3%	2%	7%	Strengthened						15 Trucking						
7 Days - 11/29/23 to 12/06/23		Period 1 of 10 (Current)																	
PREVIOUS WEEKS (EDUCATIONAL PURPOSES ONLY/NOT A STOCK OR INVESTMENT RECOMMENDATION)																			
Length - Begin/End	Industry/Sub-Industry	Period	#	Min	Avg	Max	Status	2Weakest	8VWeak	7Weaker	6Weak	5Avg	4Strong	3Stronger	2VStrong	1Strongest			
7 Days - 11/29/23 to 12/06/23	TRANSPORTATION	Period 1 of 10 (Current)	83	-1%	3%	209%	Strengthened					83 TRANSPORT							
7 Days - 11/22/23 to 11/29/23	TRANSPORTATION	Period 2 of 10	83	-1%	0%	19%	Weakened					83 TRANSPORT							
7 Days - 11/15/23 to 11/22/23	TRANSPORTATION	Period 3 of 10	83	-1%	1%	19%	Strengthened					83 TRANSPORT							
7 Days - 11/08/23 to 11/15/23	TRANSPORTATION	Period 4 of 10	83	-1%	0%	20%	Strengthened					83 TRANSPORT->	83 TRANSPORT->						
7 Days - 11/01/23 to 11/08/23	TRANSPORTATION	Period 5 of 10	83	-2%	0%	17%	Unchanged					83 TRANSPORT							
7 Days - 10/25/23 to 11/01/23	TRANSPORTATION	Period 6 of 10	83	-2%	0%	28%	Unchanged					83 TRANSPORT							
7 Days - 10/18/23 to 10/25/23	TRANSPORTATION	Period 7 of 10	83	-4%	-3%	11%	Weakened					<-TRANSPORT 83	<-TRANSPORT 83						
7 Days - 10/11/23 to 10/18/23	TRANSPORTATION	Period 8 of 10	83	-2%	-2%	17%	Unchanged					83 TRANSPORT							
7 Days - 10/04/23 to 10/11/23	TRANSPORTATION	Period 9 of 10	83	-3%	4%	30%	Strengthened					83 TRANSPORT->	83 TRANSPORT->						
7 Days - 09/27/23 to 10/04/23	TRANSPORTATION	Period 10 of 10	83	-3%	3%	8%	Weakened					<-TRANSPORT 83	<-TRANSPORT 83						
7 Days - 11/29/23 to 12/06/23	TRANSPORTATION - Air Delivery & Freight Service	Period 1 of 10 (Current)	11	-3%	1%	8%	Strengthened					11 AirDelv/Frt							
7 Days - 11/22/23 to 11/29/23	TRANSPORTATION - Air Delivery & Freight Service	Period 2 of 10	11	-3%	-1%	1%	Strengthened					11 AirDelv/Frt							
7 Days - 11/15/23 to 11/22/23	TRANSPORTATION - Air Delivery & Freight Service	Period 3 of 10	11	-3%	0%	4%	Unchanged					11 AirDelv/Frt							
7 Days - 11/08/23 to 11/15/23	TRANSPORTATION - Air Delivery & Freight Service	Period 4 of 10	11	0%	4%	12%	Strengthened					11 AirDelv/Frt							
7 Days - 11/01/23 to 11/08/23	TRANSPORTATION - Air Delivery & Freight Service	Period 5 of 10	11	-2%	-1%	5%	Unchanged					11 AirDelv/Frt							
7 Days - 10/25/23 to 11/01/23	TRANSPORTATION - Air Delivery & Freight Service	Period 6 of 10	11	-1%	1%	12%	Strengthened					11 AirDelv/Frt->	11 AirDelv/Frt->						
7 Days - 10/18/23 to 10/25/23	TRANSPORTATION - Air Delivery & Freight Service	Period 7 of 10	11	-3%	-3%	0%	Weakened					<-AirDelv/Frt 11	<-AirDelv/Frt 11						
7 Days - 10/11/23 to 10/18/23	TRANSPORTATION - Air Delivery & Freight Service	Period 8 of 10	11	-7%	-2%	3%	Unchanged					11 AirDelv/Frt							
7 Days - 10/04/23 to 10/11/23	TRANSPORTATION - Air Delivery & Freight Service	Period 9 of 10	11	-2%	3%	21%	Strengthened					11 AirDelv/Frt							
7 Days - 09/27/23 to 10/04/23	TRANSPORTATION - Air Delivery & Freight Service	Period 10 of 10	11	-3%	0%	8%	Weakened					11 AirDelv/Frt							
7 Days - 11/29/23 to 12/06/23	TRANSPORTATION - Air Services	Period 1 of 10 (Current)	2	1%	3%	-3%	Unchanged												
7 Days - 11/22/23 to 11/29/23	TRANSPORTATION - Air Services	Period 2 of 10	2	1%	15%	18%	Strengthened												
7 Days - 11/15/23 to 11/22/23	TRANSPORTATION - Air Services	Period 3 of 10	2	8%	8%	10%	Strengthened					2 Air Services->	2 Air Services->	2 Air Services->	2 Air Services->	2 Air Services->			
7 Days - 11/08/23 to 11/15/23	TRANSPORTATION - Air Services	Period 4 of 10	2	2%	4%	5%	Strengthened					2 Air Services	2 Air Services->						
7 Days - 11/01/23 to 11/08/23	TRANSPORTATION - Air Services	Period 5 of 10	2	1%	3%	4%	Unchanged					2 Air Services							
7 Days - 10/25/23 to 11/01/23	TRANSPORTATION - Air Services	Period 6 of 10	2	-5%	-5%	-3%	Weakened					<-Air Services 2	<-Air Services 2						
7 Days - 10/18/23 to 10/25/23	TRANSPORTATION - Air Services	Period 7 of 10	2	-2%	-12%	-2%	Weakened					<-Air Services 2	<-Air Services 2						
7 Days - 10/11/23 to 10/18/23	TRANSPORTATION - Air Services	Period 8 of 10	2	-1%	1%	11%	Strengthened					2 Air Services->	2 Air Services->						
7 Days - 10/04/23 to 10/11/23	TRANSPORTATION - Air Services	Period 9 of 10	2	0%	0%	0%	Unchanged					2 Air Services							
7 Days - 09/27/23 to 10/04/23	TRANSPORTATION - Air Services	Period 10 of 10	2	7%	-5%	-2%	Unchanged					2 Air Services							
7 Days - 11/29/23 to 12/06/23	TRANSPORTATION - Major Airlines	Period 1 of 10 (Current)	4	4%	8%	11%	Strengthened					4 Major Airlines->	4 Major Airlines->	4 Major Airlines->					
7 Days - 11/22/23 to 11/29/23	TRANSPORTATION - Major Airlines	Period 2 of 10	4	1%	3%	3%	Strengthened					4 Major Airlines							
7 Days - 11/15/23 to 11/22/23	TRANSPORTATION - Major Airlines	Period 3 of 10	4	-1%	0%	1%	Strengthened					4 Major Airlines->	4 Major Airlines->						
7 Days - 11/08/23 to 11/15/23	TRANSPORTATION - Major Airlines	Period 4 of 10	4	3%	4%	5%	Strengthened					4 Major Airlines->	4 Major Airlines->						
7 Days - 11/01/23 to 11/08/23	TRANSPORTATION - Major Airlines	Period 5 of 10	4	9%	9%	10%	Unchanged					4 Major Airlines							
7 Days - 10/25/23 to 11/01/23	TRANSPORTATION - Major Airlines	Period 6 of 10	4	3%	-1%	1%	Unchanged					4 Major Airlines							
7 Days - 10/18/23 to 10/25/23	TRANSPORTATION - Major Airlines	Period 7 of 10	4	-3%	-4%	-3%	Weakened					<-Major Airlines 4	<-Major Airlines 4						
7 Days - 10/11/23 to 10/18/23	TRANSPORTATION - Major Airlines	Period 8 of 10	4	-5%	-9%	-6%	Weakened					<-Major Airlines 4	<-Major Airlines 4						
7 Days - 10/04/23 to 10/11/23	TRANSPORTATION - Major Airlines	Period 9 of 10	4	-4%	-2%	0%	Unchanged					4 Major Airlines							
7 Days - 09/27/23 to 10/04/23	TRANSPORTATION - Major Airlines	Period 10 of 10	4	-2%	0%	1%	Strengthened					4 Major Airlines->	4 Major Airlines->						
7 Days - 11/29/23 to 12/06/23	TRANSPORTATION - Railroads	Period 1 of 10 (Current)	8	3%	6%	6%	Strengthened												
7 Days - 11/22/23 to 11/29/23	TRANSPORTATION - Railroads	Period 2 of 10	8	3%	0%	1%	Weakened												
7 Days - 11/15/23 to 11/22/23	TRANSPORTATION - Railroads	Period 3 of 10	8	-1%	1%	5%	Strengthened					8 Railroads->	8 Railroads->	8 Railroads->	8 Railroads->				
7 Days - 11/08/23 to 11/15/23	TRANSPORTATION - Railroads	Period 4 of 10	8	3%	4%	7%	Strengthened					8 Railroads->	8 Railroads->	8 Railroads->	8 Railroads->				
7 Days - 11/01/23 to 11/08/23	TRANSPORTATION - Railroads	Period 5 of 10	8	1%	4%	12%	Strengthened					8 Railroads->	8 Railroads->	8 Railroads->	8 Railroads->				
7 Days - 10/25/23 to 11/01/23	TRANSPORTATION - Railroads	Period 6 of 10	8	0%	2%	5%	Strengthened					8 Railroads->	8 Railroads->	8 Railroads->	8 Railroads->				
7 Days - 10/18/23 to 10/25/23	TRANSPORTATION - Railroads	Period 7 of 10	8	-3%	5%	2%	Weakened					<-Railroads 8	<-Railroads 8						
7 Days - 10/11/23 to 10/18/23	TRANSPORTATION - Railroads	Period 8 of 10	8	4%	-2%	1%	Weakened					<-Railroads 8	<-Railroads 8						
7 Days - 10/04/23 to 10/11/23	TRANSPORTATION - Railroads	Period 9 of 10	8	3%	3%	7%	Strengthened					8 Railroads->	8 Railroads->						
7 Days - 09/27/23 to 10/04/23	TRANSPORTATION - Railroads	Period 10 of 10	8	-1%	-3%	2%	Unchanged					8 Railroads							
7 Days - 11/29/23 to 12/06/23	TRANSPORTATION - Regional Airlines	Period 1 of 10 (Current)	9	7%	25%	209%	Strengthened					9 Reg'l Airlines->	9 Reg'l Airlines->						
7 Days - 11/22/23 to 11/29/23	TRANSPORTATION - Regional Airlines	Period 2 of 10	9	3%	4%	19%	Strengthened					9 Reg'l Airlines							
7 Days - 11/15/23 to 11/22/23	TRANSPORTATION - Regional Airlines	Period 3 of 10	9	3%	2%	16%	Weakened					9 Reg'l Airlines							
7 Days - 11/08/23 to 11/15/23	TRANSPORTATION - Regional Airlines	Period 4 of 10	9	1%	9%	20%	Strengthened					9 Reg'l Airlines							
7 Days - 11/01/23 to 11/08/23	TRANSPORTATION - Regional Airlines	Period 5 of 10	9	7%	6%	17%	Strengthened					9 Reg'l Airlines->	9 Reg'l Airlines->						
7 Days - 10/25/23 to 11/01/23	TRANSPORTATION - Regional Airlines	Period 6 of 10	9	3%	-5%	11%	Unchanged					9 Reg'l Airlines							
7 Days - 10/18/23 to 10/25/23	TRANSPORTATION - Regional Airlines	Period 7 of 10	9	-5%	-2%	1%	Unchanged					9 Reg'l Airlines							
7 Days - 10/11/23 to 10/18/23	TRANSPORTATION - Regional Airlines	Period 8 of 10	9	-2%	-7%	1%	Unchanged					9 Reg'l Airlines							
7 Days - 10/04/23 to 10/11/23	TRANSPORTATION - Regional Airlines	Period 9 of 10	9	3%	0%	5%	Weakened					9 Reg'l Airlines							
7 Days - 09/27/23 to 10/04/23	TRANSPORTATION - Regional Airlines	Period 10 of 10	9	3%	7%	7%	Unchanged					9 Reg'l Airlines							
7 Days - 11/29/23 to 12/06/23	TRANSPORTATION - Shipping	Period 1 of 10 (Current)	34	-1%	-1%	5%	Weakened												
7 Days - 11/22/23 to 11/29/23	TRANSPORTATION - Shipping	Period 2 of 10	34	-1%	-1%	10%	Weakened												
7 Days - 11/15/23 to 11/22/23	TRANSPORTATION - Shipping	Period 3 of 10	34	-3%	2%	19%	Strengthened												
7 Days - 11/08/23 to 11/15/23	TRANSPORTATION - Shipping	Period 4 of 10	34	-4%	4%	20%	Strengthened					34 Shipping	34 Shipping->						
7 Days - 11/01/23 to 11/08/23	TRANSPORTATION - Shipping	Period 5 of 10	34	-1%	-3%	3%	Unchanged					34 Shipping							
7 Days - 10/25/23 to 11/01/23	TRANSPORTATION - Shipping	Period 6 of 10	34	3%	0%	11%	Weakened					<-Shipping 34	<-Shipping 34						
7 Days - 10/18/23 to 10/25/23	TRANSPORTATION - Shipping	Period 7 of 10	34	-1%	-2%	11%	Weakened												
7 Days - 10/11/23 to 10/18/23	TRANSPORTATION - Shipping	Period 8 of 10	34	-4%	1%	17%	Strengthened												
7 Days - 10/04/23 to 10/11/23	TRANSPORTATION - Shipping	Period 9 of 10	34	0%	6%	30%	Strengthened					34 Shipping				</			

2C. Stocks 1 Week Strongest and Weakest

What: stocks currently rated Strongest/Weakest (highest/lowest of 9 strength ratings)

Why: most interesting stocks for available capital because

- the Strongest have the least amount of overhead supply to dampen breakouts while
- the Weakest may be prone to volatility, subject to big pops from bottom-fishing and short-covering BUT ALSO to bigger and faster falls.

(Not guaranteed and not a recommendation – weak stocks in weakening sub-industries may be better shorts than high-flyers.)

STOCK DETAIL (EDUCATIONAL PURPOSES ONLY/NOT FINANCIAL ADVICE)										1 week 11/29/23 to 12/06/23									
Sub-Industry	Ticker	Company	ID1	ID2	% Chg	ID3	Status	9Weakest	8VWeak	7Weaker	6Weak	5Avg	4Strong	3Stronger	2VStrong	1Strongest			
TRANSPORTATION - Air Delivery & Freight Service	FDX	Fedex Corp	15-51-51	79%	5%	11%	1Strongest									FDX			
TRANSPORTATION - Air Delivery & Freight Service	EXPD	Expeditors International of Washington Inc	15-51-51	81%	1%	5%	1Strongest									EXPD			
TRANSPORTATION - Air Delivery & Freight Service	EURN	Euronav NV Antwerpen	15-51-51	82%	0%	6%	1Strongest									EURN			
TRANSPORTATION - Air Delivery & Freight Service	XPO	XPO Logistics Inc	15-51-51	88%	-5%	38%	1Strongest									XPO			
TRANSPORTATION - Air Delivery & Freight Service	FWRD	Forward Air Corporation	95-51-51	28%	1%	-29%	9Weakest	FWRD											
TRANSPORTATION - Air Delivery & Freight Service	ATSG	Air Transport Services	95-51-51	7%	-3%	-21%	9Weakest	ATSG											
TRANSPORTATION - Air Delivery & Freight Service	ZTO	ZTO Express (Cayman) Inc	95-51-51	21%	-4%	-17%	9Weakest	ZTO											
TRANSPORTATION - Air Services	CAAP	Corporacion America Airports S A	15-15-51	96%	-3%	21%	1Strongest									CAAP			
TRANSPORTATION - Air Services	EH	Ehang Holdings Ltd	15-15-51	14%	-3%	17%	1Strongest									EH			
TRANSPORTATION - Railroads	UNP	Union Pacific Corp	15-31-51	73%	5%	12%	1Strongest									UNP			
TRANSPORTATION - Railroads	WAB	Wabtec Corporation	15-31-51	98%	3%	12%	1Strongest									WAB			
TRANSPORTATION - Regional Airlines	SKYW	Skywest Inc	15-51-51	67%	5%	37%	1Strongest									SKYW			
TRANSPORTATION - Shipping	MATX	Matson Inc	15-59-51	72%	2%	22%	1Strongest									MATX			
TRANSPORTATION - Shipping	LPG	Dorian LPG Ltd	15-59-51	95%	2%	59%	1Strongest									LPG			
TRANSPORTATION - Shipping	DAC	Danaos Corp	15-59-51	64%	0%	9%	1Strongest									DAC			
TRANSPORTATION - Shipping	OSG	Overseas Shipholding Group Inc	15-59-51	91%	0%	19%	1Strongest									OSG			
TRANSPORTATION - Shipping	ESEA	Euroseas Ltd	15-59-51	74%	0%	27%	1Strongest									ESEA			
TRANSPORTATION - Shipping	PANL	Pangaea Logistics Solutions Ltd	11-59-51	94%	-1%	13%	1Strongest								PANL-->	PANL-->			
TRANSPORTATION - Shipping	TNK	Teekay Tankers Ltd	15-59-51	89%	-2%	14%	1Strongest									TNK			
TRANSPORTATION - Shipping	ZIM	ZIM Integrated Shipping Services Ltd	95-59-51	8%	5%	-49%	9Weakest	ZIM											
TRANSPORTATION - Shipping	CPLP	Capital Product Partners L.P.	99-59-51	61%	-3%	-2%	9Weakest	<---CPLP	<---CPLP	<---CPLP	<---CPLP	<---CPLP	<---CPLP	<---CPLP	<---CPLP				
TRANSPORTATION - Shipping	DSX	Diana Shipping Inc	99-59-51	33%	-11%	-19%	9Weakest	<---DSX	<---DSX	<---DSX	<---DSX								
TRANSPORTATION - Trucking	SNDR	Schneider National Inc	95-61-51	48%	3%	-12%	9Weakest	SNDR											
TRANSPORTATION - Trucking	HTLD	Heartland Express Inc	95-61-51	18%	2%	-10%	9Weakest	HTLD											
TRANSPORTATION - Trucking	TFII	TFI International Inc	99-61-51	81%	-2%	-3%	9Weakest	<---TFII	<---TFII										

STOCK

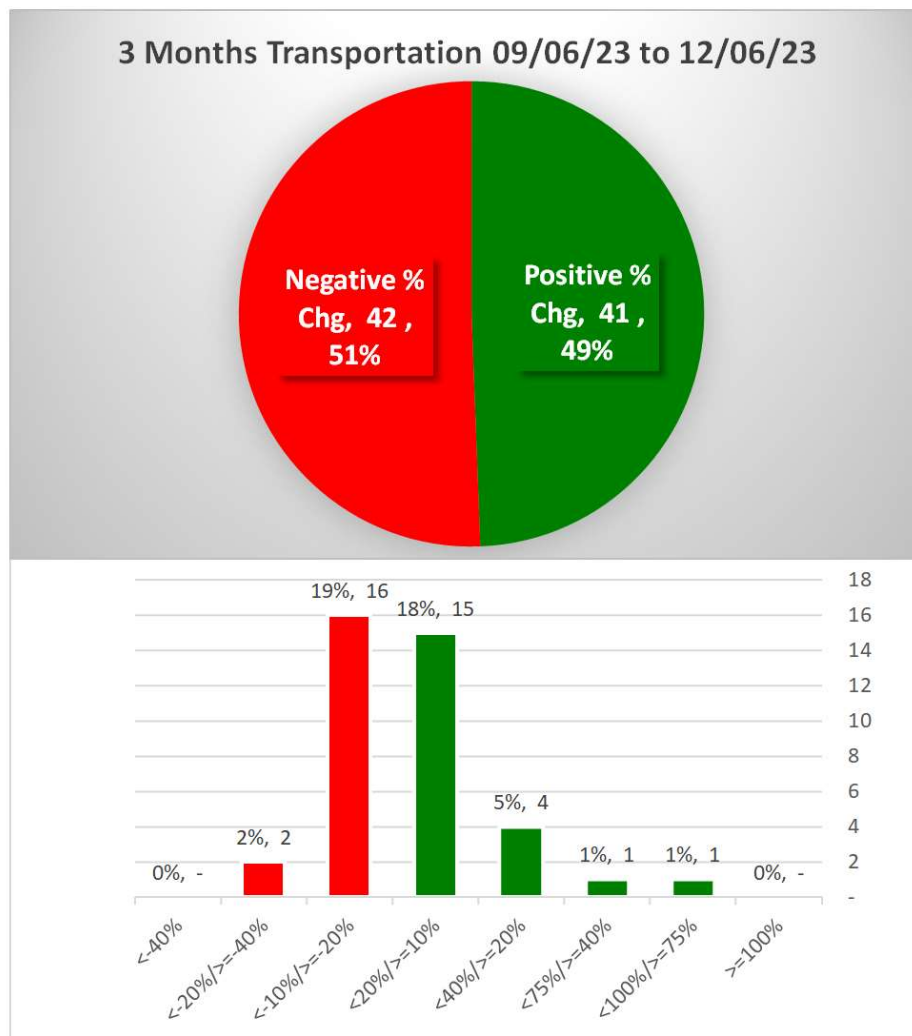
MARKET

ORGANIZER

Strongest to Weakest stocks ratio is 16:9 (19% and 11% of total) 11/29/23 to 12/06/23.

3. STRENGTH BY LOOKBACK PERIOD (with Best/Worst stocks)

3A. Lookback 3 Months

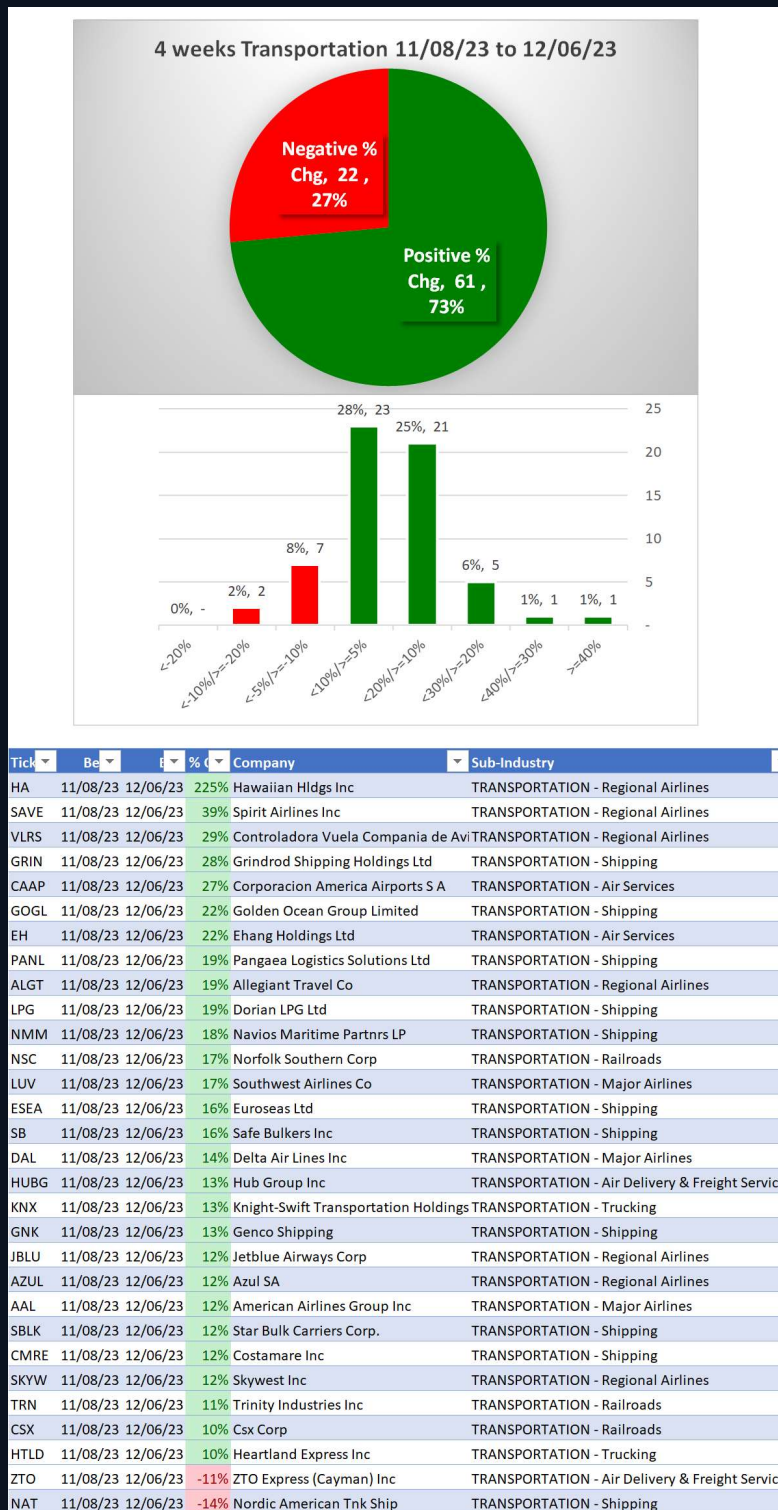


Tick	Be	E	% C	Company	Sub-Industry
HA	09/06/23	12/06/23	83%	Hawaiian Hldgs Inc	TRANSPORTATION - Regional Airlines
LPG	09/06/23	12/06/23	53%	Dorian LPG Ltd	TRANSPORTATION - Shipping
PANL	09/06/23	12/06/23	27%	Pangaea Logistics Solutions Ltd	TRANSPORTATION - Shipping
GRIN	09/06/23	12/06/23	26%	Grindrod Shipping Holdings Ltd	TRANSPORTATION - Shipping
TNK	09/06/23	12/06/23	24%	Teekay Tankers Ltd	TRANSPORTATION - Shipping
SB	09/06/23	12/06/23	21%	Safe Bulkers Inc	TRANSPORTATION - Shipping
ATSG	09/06/23	12/06/23	-28%	Air Transport Services	TRANSPORTATION - Air Delivery & Freight Service
ZIM	09/06/23	12/06/23	-38%	ZIM Integrated Shipping Services Ltd	TRANSPORTATION - Shipping

6 stocks >+20% and 2 stocks <-20% (7% and 2% of total) 09/06/23 to 12/06/23.

3. STRENGTH BY LOOKBACK PERIOD (with Best/Worst stocks)

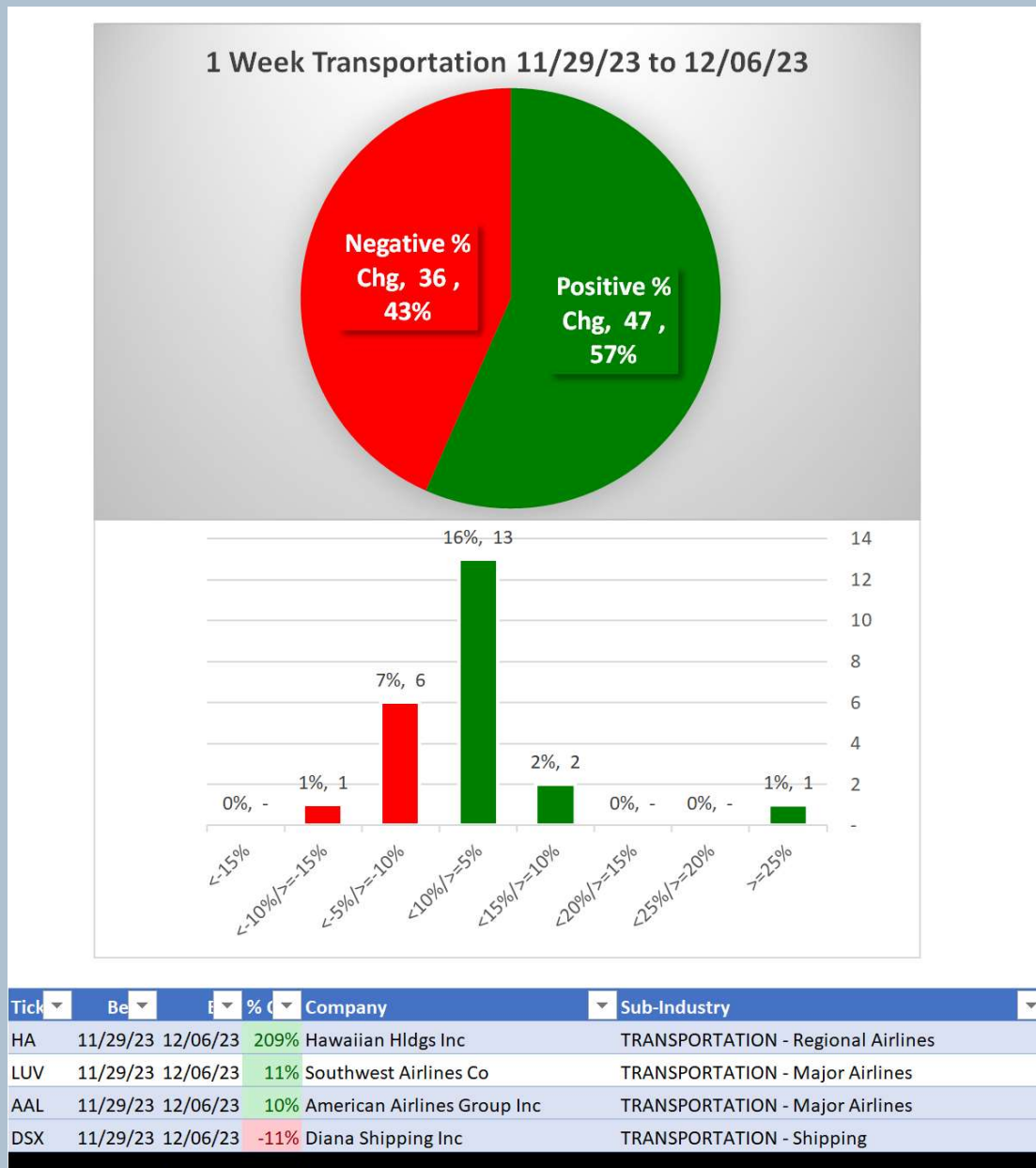
3B. Lookback 4 Weeks



28 stocks > +10% and 2 stocks < -10% (34% and 2% of total) 11/08/23 to 12/06/23.

3. STRENGTH BY LOOKBACK PERIOD (with Best/Worst stocks)

3C. Lookback 1 Week



3 stocks >+10% and 1 stock <-10% (4% and 1% of total) 11/29/23 to 12/06/23.