

Industry Status: Specialty Retail

1 week 12/08/23 to 12/15/23								
9Weakest	8VWeak	7Weaker	6Weak	5Avg	4Strong	3Stronger	2VStrong	1Strongest
.	.	.	.	70 SPEC RETAIL->	70 SPEC RETAIL->	.	.	.
.	22 Apparel	.	.	.
.	.	.	.	15 Auto Dealers->	15 Auto Dealers->	15 Auto Dealers->	.	.
.	.	.	.	2 Jewelry->	2 Jewelry->	.	.	.
.	1 Music/Video
.	.	.	.	24 Spec Retail
.	.	.	.	5 Sportg Gds
.	.	1 Toy/Hobby
.

December 15, 2023

UP +1 to **STRONG** strength rating
(**4th** strongest of 9 levels)
previous move was **also UP**

1 mo 49% stocks >10%/1 wk 89% positive stocks, Auto Dealers +2 strength ratings

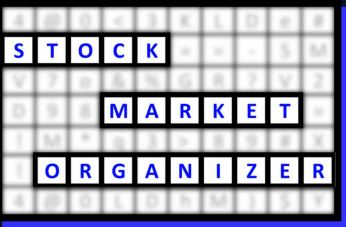


Table of Contents

1	1. INDUSTRY OVERVIEW	
		1A. Performance
		1B. Background
2	2. SUB-INDUSTRIES AND STOCK DETAIL	
		2A. Sub-Industries Overview
		2B. Sub-Industries 10-Week Strengthening Analysis
		2C. Stocks 1 Week Strongest and Weakest
5	3. STRENGTH BY LOOKBACK PERIOD (with Best/Worst stocks)	
		3A. Lookback 3 Months
		3B. Lookback 4 weeks
		3C. Lookback 1 Week

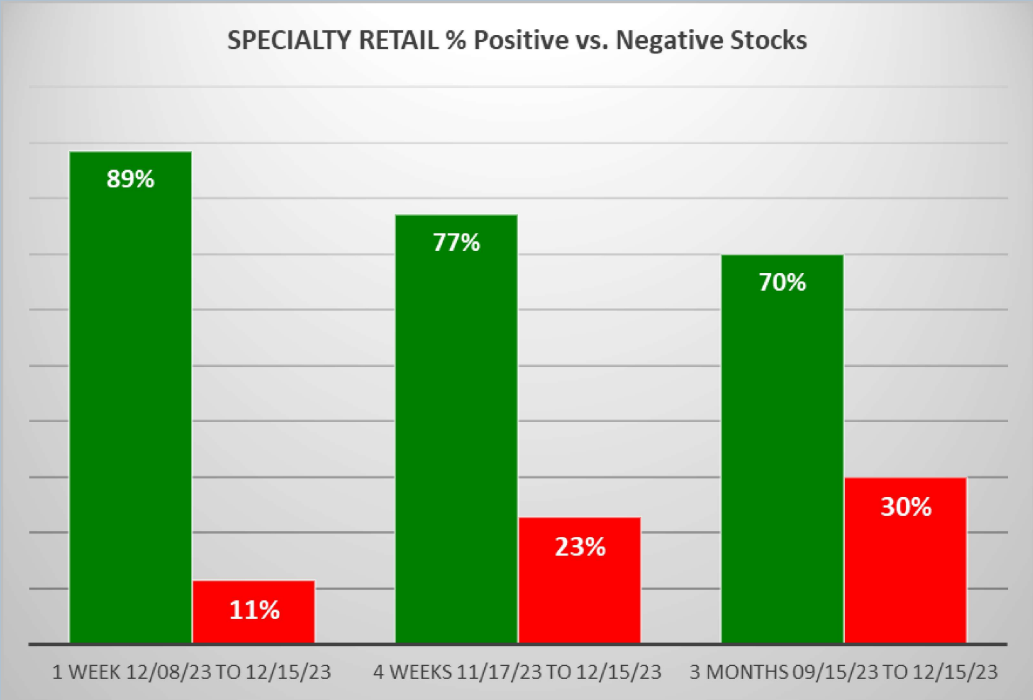
1. INDUSTRY OVERVIEW

1A. Performance

Past 10 Weeks Strengthening/Weakening week-by-week, per the following chart:

9Weakest	8VWeak	7Weaker	6Weak	5Avg	4Strong	3Stronger	2VStrong	1Strongest	Period
.	.	.	.	70 SPEC RETAIL->	70 SPEC RETAIL->	.	.	.	7 Days - 12/08/23 to 12/15/23
.	.	.	.	70 SPEC RETAIL	7 Days - 12/01/23 to 12/08/23
.	.	.	.	70 SPEC RETAIL	7 Days - 11/24/23 to 12/01/23
.	.	.	.	70 SPEC RETAIL	7 Days - 11/17/23 to 11/24/23
.	.	.	70 SPEC RETAIL->	70 SPEC RETAIL->	7 Days - 11/10/23 to 11/17/23
.	.	.	<-SPEC RETAIL 70	<-SPEC RETAIL 70	7 Days - 11/03/23 to 11/10/23
.	.	70 SPEC RETAIL->	70 SPEC RETAIL->	70 SPEC RETAIL->	7 Days - 10/27/23 to 11/03/23
.	.	<-SPEC RETAIL 70	<-SPEC RETAIL 70	7 Days - 10/20/23 to 10/27/23
.	.	.	70 SPEC RETAIL	7 Days - 10/13/23 to 10/20/23
.	.	.	70 SPEC RETAIL	7 Days - 10/06/23 to 10/13/23

STRENGTHENING 1 Week vs. Mid- and Longer-Term // 1 week positive/negative stocks ratio is HIGHER than both 4 weeks and 3 Months, per the following chart:



1B. Background

Largest of 7 sub-industries (70 stocks, average 10):

- * Specialty Retail (24 stocks)
- * Apparel Stores (22 stocks)
- * Auto Dealerships (15 stocks)

Top 10 by Market Capitalization:

NFLX/Netflix Inc, PDD/Pinduoduo Inc, CPRT/Copart Inc, ROST/Ross Stores Inc, TSCO/Tractor Supply Co, DKS/Dick's Sporting Goods, FIVE/Five Below Inc., KMX/Carmax Inc, PAG/Penske Automotive, ETSY/Etsy Inc

2. SUB-INDUSTRIES AND STOCKS DETAIL

2A. Sub-Industries Overview

Strengthened: 2/7 sub-industries

Weakened: 0/7 sub-industries

STRONGEST at Strongest rating/1st strongest of 9 levels:

- * Music & Video Stores (1 stock)

WEAKEST at Weaker rating/7th strongest of 9 levels:

- * Toy & Hobby Stores (1 stock)

2B. Sub-Industries 10-Week Strengthening Analysis

What: recent week-by-week strength changes for the industry and its sub-industries
Why: objective measurement of strengthening and weakening enabling comparison within and across industries and sub-industries

INDUSTRY CURRENT PERIOD SUMMARY										1 week 12/08/23 to 12/15/23									
Length - Begin/End	Industry/Sub-Industry	Period	#	Min	Avg	Max	Status	WWeakest	BVWeak	ZWeaker	6Week	5Avg	4Strong	3Stronger	2VStrong	1Strongest			
7 Days - 12/08/23 to 12/15/23	SPECIALTY RETAIL	Period 1 of 10 (Current)	70	9%	6%	28%	Strengthened						70 SPEC RETAIL->	70 SPEC RETAIL->					
7 Days - 12/08/23 to 12/15/23	SPECIALTY RETAIL - Apparel Stores	Period 1 of 10 (Current)	22	4%	4%	15%	Strengthened						22 Apparel						
7 Days - 12/08/23 to 12/15/23	SPECIALTY RETAIL - Auto Dealerships	Period 1 of 10 (Current)	15	0%	9%	28%	Strengthened						15 Auto Dealers->	15 Auto Dealers->	15 Auto Dealers->				
7 Days - 12/08/23 to 12/15/23	SPECIALTY RETAIL - Jewelry Stores	Period 1 of 10 (Current)	2	9%	8%	11%	Strengthened						2 Jewelry->	2 Jewelry->					
7 Days - 12/08/23 to 12/15/23	SPECIALTY RETAIL - Music & Video Stores	Period 1 of 10 (Current)	1	4%	4%	4%	Unchanged									1 Music/Video			
7 Days - 12/08/23 to 12/15/23	SPECIALTY RETAIL - Specialty Retail	Period 1 of 10 (Current)	24	9%	6%	18%	Strengthened						24 Spec Retail						
7 Days - 12/08/23 to 12/15/23	SPECIALTY RETAIL - Sporting Goods Stores	Period 1 of 10 (Current)	5	0%	6%	9%	Strengthened						5 Sport Gds						
7 Days - 12/08/23 to 12/15/23	SPECIALTY RETAIL - Toy & Hobby Stores	Period 1 of 10 (Current)	1	2%	2%	2%	Unchanged			1 Toy/Hobby									
7 Days - 12/08/23 to 12/15/23		Period 1 of 10 (Current)																	
PREVIOUS WEEKS (EDUCATIONAL PURPOSES ONLY/NOT A STOCK OR INVESTMENT RECOMMENDATION)																			
Length - Begin/End	Industry/Sub-Industry	Period	#	Min	Avg	Max	Status	WWeakest	BVWeak	ZWeaker	6Week	5Avg	4Strong	3Stronger	2VStrong	1Strongest			
7 Days - 12/08/23 to 12/15/23	SPECIALTY RETAIL	Period 1 of 10 (Current)	70	9%	6%	28%	Strengthened						70 SPEC RETAIL->	70 SPEC RETAIL->					
7 Days - 12/01/23 to 12/08/23	SPECIALTY RETAIL	Period 2 of 10	70	3%	-1%	27%	Weakened						70 SPEC RETAIL						
7 Days - 11/24/23 to 12/01/23	SPECIALTY RETAIL	Period 3 of 10	70	3%	5%	27%	Strengthened						70 SPEC RETAIL						
7 Days - 11/17/23 to 11/24/23	SPECIALTY RETAIL	Period 4 of 10	70	3%	1%	11%	Unchanged						70 SPEC RETAIL						
7 Days - 11/10/23 to 11/17/23	SPECIALTY RETAIL	Period 5 of 10	70	2%	1%	7%	Unchanged						70 SPEC RETAIL->	70 SPEC RETAIL->					
7 Days - 11/03/23 to 11/10/23	SPECIALTY RETAIL	Period 6 of 10	70	7%	4%	17%	Weakened						<SPEC RETAIL 70	<SPEC RETAIL 70					
7 Days - 10/27/23 to 11/03/23	SPECIALTY RETAIL	Period 7 of 10	70	9%	8%	24%	Strengthened						70 SPEC RETAIL->	70 SPEC RETAIL->					
7 Days - 10/20/23 to 10/27/23	SPECIALTY RETAIL	Period 8 of 10	70	4%	4%	13%	Weakened						<SPEC RETAIL 70	<SPEC RETAIL 70					
7 Days - 10/13/23 to 10/20/23	SPECIALTY RETAIL	Period 9 of 10	70	7%	1%	21%	Unchanged						70 SPEC RETAIL						
7 Days - 10/06/23 to 10/13/23	SPECIALTY RETAIL	Period 10 of 10	70	7%	-1%	21%	Unchanged						70 SPEC RETAIL						
7 Days - 12/08/23 to 12/15/23	SPECIALTY RETAIL - Apparel Stores	Period 1 of 10 (Current)	22	4%	4%	15%	Strengthened							22 Apparel					
7 Days - 12/01/23 to 12/08/23	SPECIALTY RETAIL - Apparel Stores	Period 2 of 10	22	3%	1%	27%	Weakened							22 Apparel					
7 Days - 11/24/23 to 12/01/23	SPECIALTY RETAIL - Apparel Stores	Period 3 of 10	22	0%	6%	17%	Strengthened						22 Apparel->	22 Apparel->					
7 Days - 11/17/23 to 11/24/23	SPECIALTY RETAIL - Apparel Stores	Period 4 of 10	22	5%	-1%	6%	Weakened						22 Apparel						
7 Days - 11/10/23 to 11/17/23	SPECIALTY RETAIL - Apparel Stores	Period 5 of 10	22	5%	6%	32%	Strengthened						22 Apparel						
7 Days - 11/03/23 to 11/10/23	SPECIALTY RETAIL - Apparel Stores	Period 6 of 10	22	7%	4%	2%	Weakened						22 Apparel						
7 Days - 10/27/23 to 11/03/23	SPECIALTY RETAIL - Apparel Stores	Period 7 of 10	22	7%	7%	15%	Strengthened						22 Apparel->	22 Apparel->					
7 Days - 10/20/23 to 10/27/23	SPECIALTY RETAIL - Apparel Stores	Period 8 of 10	22	2%	-3%	8%	Weakened						<Apparel 22	<Apparel 22					
7 Days - 10/13/23 to 10/20/23	SPECIALTY RETAIL - Apparel Stores	Period 9 of 10	22	5%	3%	21%	Strengthened						<Apparel 22	<Apparel 22					
7 Days - 10/06/23 to 10/13/23	SPECIALTY RETAIL - Apparel Stores	Period 10 of 10	22	6%	0%	11%	Unchanged						22 Apparel						
7 Days - 12/08/23 to 12/15/23	SPECIALTY RETAIL - Auto Dealerships	Period 1 of 10 (Current)	15	0%	9%	28%	Strengthened						15 Auto Dealers->	15 Auto Dealers->	15 Auto Dealers->				
7 Days - 12/01/23 to 12/08/23	SPECIALTY RETAIL - Auto Dealerships	Period 2 of 10	15	0%	2%	14%	Weakened						<Auto Dealers 15	<Auto Dealers 15					
7 Days - 11/24/23 to 12/01/23	SPECIALTY RETAIL - Auto Dealerships	Period 3 of 10	15	4%	2%	12%	Strengthened						15 Auto Dealers->	15 Auto Dealers->					
7 Days - 11/17/23 to 11/24/23	SPECIALTY RETAIL - Auto Dealerships	Period 4 of 10	15	2%	1%	7%	Unchanged						15 Auto Dealers						
7 Days - 11/10/23 to 11/17/23	SPECIALTY RETAIL - Auto Dealerships	Period 5 of 10	15	1%	4%	10%	Strengthened						15 Auto Dealers->	15 Auto Dealers->					
7 Days - 11/03/23 to 11/10/23	SPECIALTY RETAIL - Auto Dealerships	Period 6 of 10	15	0%	-3%	6%	Weakened						<Auto Dealers 15	<Auto Dealers 15					
7 Days - 10/27/23 to 11/03/23	SPECIALTY RETAIL - Auto Dealerships	Period 7 of 10	15	7%	10%	19%	Strengthened						15 Auto Dealers->	15 Auto Dealers->					
7 Days - 10/20/23 to 10/27/23	SPECIALTY RETAIL - Auto Dealerships	Period 8 of 10	15	4%	-5%	8%	Weakened						<Auto Dealers 15	<Auto Dealers 15					
7 Days - 10/13/23 to 10/20/23	SPECIALTY RETAIL - Auto Dealerships	Period 9 of 10	15	8%	-2%	9%	Unchanged						15 Auto Dealers						
7 Days - 10/06/23 to 10/13/23	SPECIALTY RETAIL - Auto Dealerships	Period 10 of 10	15	8%	-2%	3%	Weakened						15 Auto Dealers						
7 Days - 12/08/23 to 12/15/23	SPECIALTY RETAIL - Jewelry Stores	Period 1 of 10 (Current)	2	9%	8%	11%	Strengthened						2 Jewelry->	2 Jewelry->					
7 Days - 12/01/23 to 12/08/23	SPECIALTY RETAIL - Jewelry Stores	Period 2 of 10	2	4%	9%	14%	Unchanged						2 Jewelry						
7 Days - 11/24/23 to 12/01/23	SPECIALTY RETAIL - Jewelry Stores	Period 3 of 10	2	2%	3%	7%	Unchanged						2 Jewelry						
7 Days - 11/17/23 to 11/24/23	SPECIALTY RETAIL - Jewelry Stores	Period 4 of 10	2	2%	-1%	-1%	Strengthened						2 Jewelry						
7 Days - 11/10/23 to 11/17/23	SPECIALTY RETAIL - Jewelry Stores	Period 5 of 10	2	4%	5%	14%	Strengthened						2 Jewelry->	2 Jewelry->					
7 Days - 11/03/23 to 11/10/23	SPECIALTY RETAIL - Jewelry Stores	Period 6 of 10	2	4%	0%	9%	Weakened						<Jewelry 2	<Jewelry 2					
7 Days - 10/27/23 to 11/03/23	SPECIALTY RETAIL - Jewelry Stores	Period 7 of 10	2	4%	4%	12%	Strengthened						2 Jewelry->	2 Jewelry->					
7 Days - 10/20/23 to 10/27/23	SPECIALTY RETAIL - Jewelry Stores	Period 8 of 10	2	6%	-2%	1%	Weakened						<Jewelry 2	<Jewelry 2					
7 Days - 10/13/23 to 10/20/23	SPECIALTY RETAIL - Jewelry Stores	Period 9 of 10	2	3%	0%	4%	Weakened						<Jewelry 2	<Jewelry 2					
7 Days - 10/06/23 to 10/13/23	SPECIALTY RETAIL - Jewelry Stores	Period 10 of 10	2	0%	-5%	1%	Unchanged						2 Jewelry						
7 Days - 12/08/23 to 12/15/23	SPECIALTY RETAIL - Music & Video Stores	Period 1 of 10 (Current)	1	4%	4%	4%	Unchanged									1 Music/Video			
7 Days - 12/01/23 to 12/08/23	SPECIALTY RETAIL - Music & Video Stores	Period 2 of 10	1	3%	-3%	-3%	Unchanged									1 Music/Video			
7 Days - 11/24/23 to 12/01/23	SPECIALTY RETAIL - Music & Video Stores	Period 3 of 10	1	3%	-3%	-3%	Unchanged									1 Music/Video			
7 Days - 11/17/23 to 11/24/23	SPECIALTY RETAIL - Music & Video Stores	Period 4 of 10	1	3%	3%	3%	Unchanged									1 Music/Video			
7 Days - 11/10/23 to 11/17/23	SPECIALTY RETAIL - Music & Video Stores	Period 5 of 10	1	4%	4%	4%	Unchanged									1 Music/Video			
7 Days - 11/03/23 to 11/10/23	SPECIALTY RETAIL - Music & Video Stores	Period 6 of 10	1	3%	3%	3%	Unchanged									1 Music/Video			
7 Days - 10/27/23 to 11/03/23	SPECIALTY RETAIL - Music & Video Stores	Period 7 of 10	1	9%	9%	9%	Strengthened						1 Music/Video->	1 Music/Video->	1 Music/Video->	1 Music/Video->			
7 Days - 10/20/23 to 10/27/23	SPECIALTY RETAIL - Music & Video Stores	Period 8 of 10	1	1%	-1%	-1%	Weakened						<Music/Video 1	<Music/Video 1	<Music/Video 1	<Music/Video 1			
7 Days - 10/13/23 to 10/20/23	SPECIALTY RETAIL - Music & Video Stores	Period 9 of 10	1	8%	13%	13%	Strengthened						1 Music/Video->	1 Music/Video->	1 Music/Video->	1 Music/Video->			
7 Days - 10/06/23 to 10/13/23	SPECIALTY RETAIL - Music & Video Stores	Period 10 of 10	1	7%	-7%	-7%	Weakened						<Music/Video 1	<Music/Video 1	<Music/Video 1	<Music/Video 1			
7 Days - 12/08/23 to 12/15/23	SPECIALTY RETAIL - Specialty Retail	Period 1 of 10 (Current)	24	9%	6%	18%	Strengthened						24 Spec Retail						
7 Days - 12/01/23 to 12/08/23	SPECIALTY RETAIL - Specialty Retail	Period 2 of 10	24	0%	-1%	10%	Unchanged						24 Spec Retail						
7 Days - 11/24/23 to 12/01/23	SPECIALTY RETAIL - Specialty Retail	Period 3 of 10	24	3%	5%	27%	Strengthened						24 Spec Retail->	24 Spec Retail->					
7 Days - 11/17/23 to 11/24/23	SPECIALTY RETAIL - Specialty Retail	Period 4 of 10	24	5%	2%	8%	Strengthened						24 Spec Retail						
7 Days - 11/10/23 to 11/17/23	SPECIALTY RETAIL - Specialty Retail	Period 5 of 10	24	2%	7%	24%	Strengthened						24 Spec Retail->	24 Spec Retail->					
7 Days - 11/03/23 to 11/10/23	SPECIALTY RETAIL - Specialty Retail	Period 6 of 10	24	3%	4%	17%	Weakened						<Spec Retail 24	<Spec Retail 24					
7 Days - 10/27/23 to 11/03/23	SPECIALTY RETAIL - Specialty Retail	Period 7 of 10	24	2%	9%	24%	Strengthened						24 Spec Retail->	24 Spec Retail->					
7 Days - 10/20/23 to 10/27/23	SPECIALTY RETAIL - Specialty Retail	Period 8 of 10	24	3%	-3%	13%	Weakened						24 Spec Retail						
7 Days - 10/13/23 to 10/20/23	SPECIALTY RETAIL - Specialty Retail	Period 9 of 10	24	7%	0%	13%	Strengthened						24 Spec Retail						
7 Days - 10/06/23 to 10/13/23	SPECIALTY RETAIL - Specialty Retail	Period 10 of 10	24	7%	-3%	5%	Weakened						24 Spec Retail						
7 Days - 12/08/23 to 12/15/23	SPECIALTY RETAIL - Sporting Goods Stores	Period 1 of 10 (Current)	5	0%	6%	9%	Strengthened						5 Sport Gds						
7 Days - 12/01/23 to 12/08/23	SPECIALTY RETAIL - Sporting Goods Stores	Period 2 of 10	5	8%	4%	1%	Weakened						5 Sport Gds						
7 Days - 11/24/23 to 12/01/23	SPECIALTY RETAIL - Sporting Goods Stores	Period 3 of 10	5	3%	8%	12%	Strengthened						5 Sport Gds->	5 Sport Gds->					
7 Days - 11/17/23 to 11/24/23	SPECIALTY RETAIL - Sporting Goods Stores	Period 4 of 10	5	0%	5%	11%	Unchanged						5 Sport Gds						
7 Days - 11/10/23 to 11/17/23	SPECIALTY RETAIL - Sporting Goods Stores	Period 5 of 10	5	5%	8%	13%	Strengthened						5 Sport Gds->	5 Sport Gds->					
7 Days - 11/03/23 to 11/10/23	SPECIALTY RETAIL - Sporting Goods Stores	Period 6 of 10	5	7%	2%	2%	Weakened						5 Sport Gds						
7 Days - 10/27/23 to 11/03/23	SPECIALTY RETAIL - Sporting Goods Stores	Period 7 of 10	5	9%	5%	14%	Strengthened						5 Sport Gds->	5 Sport Gds->					
7 Days - 10/20/23 to 10/27/23	SPECIALTY RETAIL - Sporting Goods Stores	Period 8 of 10	5																

2C. Stocks 1 Week Strongest and Weakest

What: stocks currently rated Strongest/Weakest (highest/lowest of 9 strength ratings)

Why: most interesting stocks for available capital because

- the Strongest have the least amount of overhead supply to dampen breakouts while
- the Weakest may be prone to volatility, subject to big pops from bottom-fishing and short-covering BUT ALSO to bigger and faster falls.

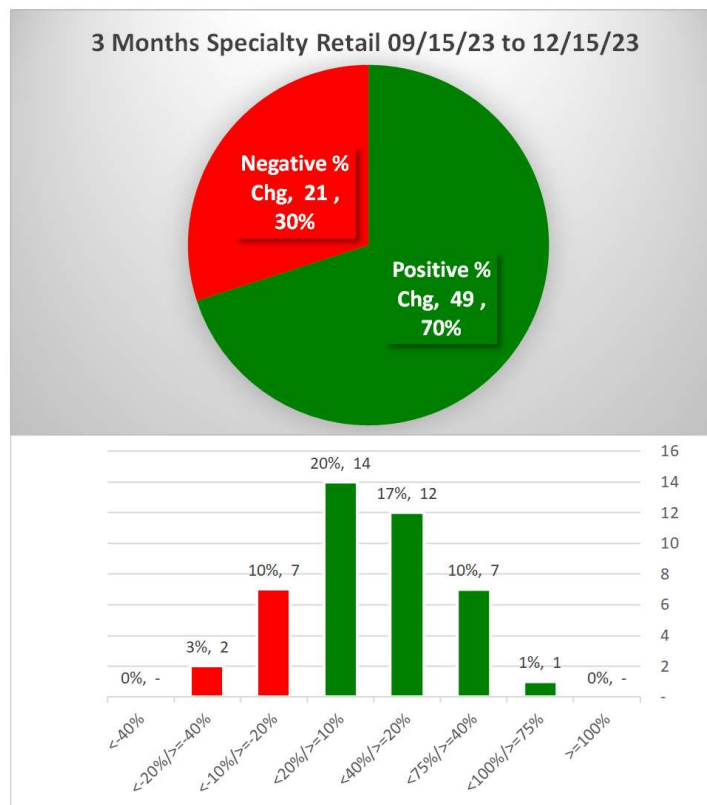
(Not guaranteed and not a recommendation – weak stocks in weakening sub-industries may be better shorts than high-flyers.)

STOCK DETAIL (EDUCATIONAL PURPOSES ONLY/NOT FINANCIAL ADVICE)										1 week 12/08/23 to 12/15/23								
Sub-Industry	Ticker	Company	ID1	ID2	% Chg	ID3	Status	9Weakest	8VWeak	7Weaker	6Weak	5Avg	4Strong	3Stronger	2VStrong	1Strongest		
SPECIALTY RETAIL - Apparel Stores	SCVL	Shoe Carnival Inc	15-41-41	60%	9%	23%	1Strongest	-	-	-	-	-	-	-	-	-	SCVL	
SPECIALTY RETAIL - Apparel Stores	ANF	Abercrombie & Fitch Co	15-41-41	100%	7%	92%	1Strongest	-	-	-	-	-	-	-	-	-	ANF	
SPECIALTY RETAIL - Apparel Stores	BKE	Buckle Inc	15-41-41	78%	6%	28%	1Strongest	-	-	-	-	-	-	-	-	-	BKE	
SPECIALTY RETAIL - Apparel Stores	GES	Guess? Incorporated	15-41-41	72%	6%	13%	1Strongest	-	-	-	-	-	-	-	-	-	GES	
SPECIALTY RETAIL - Apparel Stores	ROST	Ross Stores Inc	15-41-41	95%	1%	19%	1Strongest	-	-	-	-	-	-	-	-	-	ROST	
SPECIALTY RETAIL - Apparel Stores	URBN	Urban Outfitters Inc	15-41-41	82%	1%	14%	1Strongest	-	-	-	-	-	-	-	-	-	URBN	
SPECIALTY RETAIL - Apparel Stores	CHS	Chico's Fas Inc	15-41-41	99%	-1%	27%	1Strongest	-	-	-	-	-	-	-	-	-	CHS	
SPECIALTY RETAIL - Apparel Stores	AEO	American Eagle Outfitters Inc	15-41-41	43%	-1%	35%	1Strongest	-	-	-	-	-	-	-	-	-	AEO	
SPECIALTY RETAIL - Apparel Stores	GPS	Gap Inc	15-41-41	51%	-2%	91%	1Strongest	-	-	-	-	-	-	-	-	-	GPS	
SPECIALTY RETAIL - Apparel Stores	CATO	Cato Corporation (the)	95-41-41	6%	2%	-12%	9Weakest	CATO	-	-	-	-	-	-	-	-	CATO	
SPECIALTY RETAIL - Auto Dealerships	CVNA	Carvana Co	11-31-41	13%	28%	84%	1Strongest	-	-	-	-	-	-	-	-	-	CVNA-->	CVNA-->
SPECIALTY RETAIL - Auto Dealerships	RUSHA	Rush Enterprises Inc C I A	11-31-41	99%	6%	11%	1Strongest	-	-	-	-	-	-	-	-	-	RUSHA-->	RUSHA-->
SPECIALTY RETAIL - Auto Dealerships	GPI	Group 1 Automotive Inc	15-31-41	99%	4%	19%	1Strongest	-	-	-	-	-	-	-	-	-	GPI	
SPECIALTY RETAIL - Auto Dealerships	RUSHB	Rush Enterprises Inc C I B	11-31-41	99%	4%	10%	1Strongest	-	-	-	-	-	-	-	-	-	RUSHB-->	RUSHB-->
SPECIALTY RETAIL - Auto Dealerships	CPRT	Copart Inc	15-31-41	94%	3%	13%	1Strongest	-	-	-	-	-	-	-	-	-	CPRT	
SPECIALTY RETAIL - Auto Dealerships	CRMT	America's Car-mart Inc	95-31-41	25%	19%	-18%	9Weakest	CRMT	-	-	-	-	-	-	-	-	CRMT	
SPECIALTY RETAIL - Jewelry Stores	SIG	Signet Jewellers Limited	15-41-41	93%	5%	39%	1Strongest	-	-	-	-	-	-	-	-	-	SIG	
SPECIALTY RETAIL - Music & Video Stores	NFLX	Netflix Inc	15-15-41	58%	4%	1%	1Strongest	-	-	-	-	-	-	-	-	-	NFLX	
SPECIALTY RETAIL - Specialty Retail	CAL	Caleres Inc	15-51-41	95%	7%	20%	1Strongest	-	-	-	-	-	-	-	-	-	CAL	
SPECIALTY RETAIL - Specialty Retail	PDD	Pinduoduo Inc	15-51-41	70%	7%	67%	1Strongest	-	-	-	-	-	-	-	-	-	PDD	
SPECIALTY RETAIL - Specialty Retail	DADA	Dada Nexus Ltd	95-51-41	5%	3%	-42%	9Weakest	DADA	<---MED	<---MED	<---MED	-	-	-	-	-	DADA	
SPECIALTY RETAIL - Specialty Retail	MED	Medifast Inc	99-51-41	6%	-9%	-20%	9Weakest	<---SPWH	<---SPWH	<---SPWH	-	-	-	-	-	-	MED	
SPECIALTY RETAIL - Sporting Goods Stores	SPWH	Sportsman's Warehouse Holdings Inc	99-51-41	6%	0%	-26%	9Weakest	<---SPWH	<---SPWH	<---SPWH	-	-	-	-	-	-	SPWH	

Strongest to Weakest stocks ratio is 18:5 (26% and 7% of total) 12/08/23 to 12/15/23.

3. STRENGTH BY LOOKBACK PERIOD (with Best/Worst stocks)

3A. Lookback 3 Months

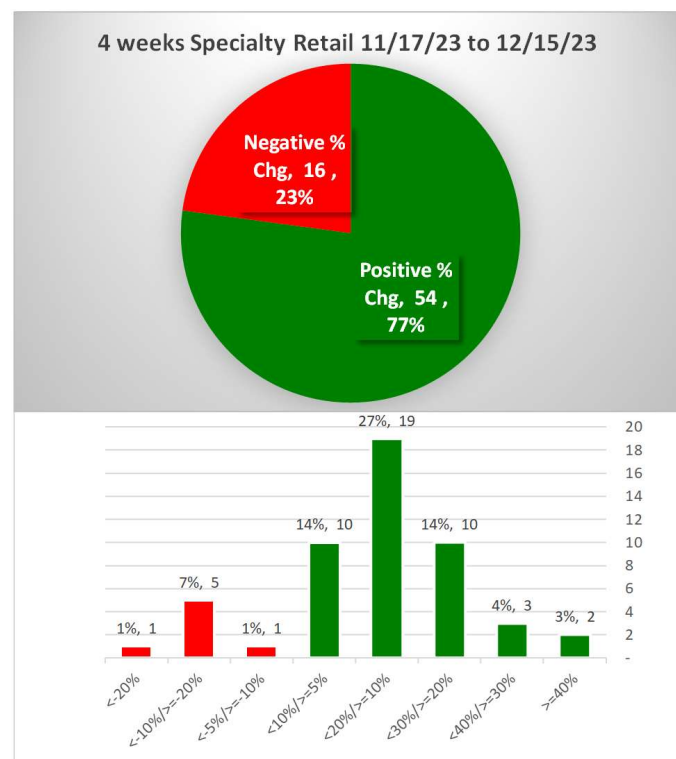


Tick	Be	E	%	Company	Sub-Industry
GPS	09/15/23	12/15/23	90%	Gap Inc	SPECIALTY RETAIL - Apparel Stores
FL	09/15/23	12/15/23	66%	Foot Locker Inc	SPECIALTY RETAIL - Specialty Retail
CHS	09/15/23	12/15/23	64%	Chico's Fas Inc	SPECIALTY RETAIL - Apparel Stores
ANF	09/15/23	12/15/23	61%	Abercrombie & Fitch Co	SPECIALTY RETAIL - Apparel Stores
HIBB	09/15/23	12/15/23	54%	Hibbett Inc	SPECIALTY RETAIL - Sporting Goods Stores
PDD	09/15/23	12/15/23	49%	Pinduoduo Inc	SPECIALTY RETAIL - Specialty Retail
FLWS	09/15/23	12/15/23	45%	1-800-Flowers.Com Inc A	SPECIALTY RETAIL - Specialty Retail
SBH	09/15/23	12/15/23	42%	Sally Beauty Holdings Inc.	SPECIALTY RETAIL - Specialty Retail
RVLV	09/15/23	12/15/23	37%	Revolve Group Inc	SPECIALTY RETAIL - Specialty Retail
SIG	09/15/23	12/15/23	34%	Signet Jewelers Limited	SPECIALTY RETAIL - Jewelry Stores
BKE	09/15/23	12/15/23	34%	Buckle Inc	SPECIALTY RETAIL - Apparel Stores
SCVL	09/15/23	12/15/23	32%	Shoe Carnival Inc	SPECIALTY RETAIL - Apparel Stores
AEO	09/15/23	12/15/23	30%	American Eagle Outfitters Inc	SPECIALTY RETAIL - Apparel Stores
DKS	09/15/23	12/15/23	28%	Dick's Sporting Goods	SPECIALTY RETAIL - Sporting Goods Stores
SFIX	09/15/23	12/15/23	25%	Stitch Fix Inc	SPECIALTY RETAIL - Apparel Stores
WISH	09/15/23	12/15/23	24%	ContextLogic Inc	SPECIALTY RETAIL - Specialty Retail
ETSY	09/15/23	12/15/23	24%	Etsy Inc	SPECIALTY RETAIL - Specialty Retail
FIVE	09/15/23	12/15/23	22%	Five Below Inc.	SPECIALTY RETAIL - Specialty Retail
ASO	09/15/23	12/15/23	22%	Academy Sports and Outdoors Inc	SPECIALTY RETAIL - Sporting Goods Stores
LE	09/15/23	12/15/23	21%	Lands End Inc	SPECIALTY RETAIL - Apparel Stores
DBI	09/15/23	12/15/23	-26%	Designer Brands Inc	SPECIALTY RETAIL - Apparel Stores
DADA	09/15/23	12/15/23	-28%	Dada Nexus Ltd	SPECIALTY RETAIL - Specialty Retail

20 stocks >+20% and 2 stocks <-20% (29% and 3% of total) 09/15/23 to 12/15/23.

3. STRENGTH BY LOOKBACK PERIOD (with Best/Worst stocks)

3B. Lookback 4 Weeks



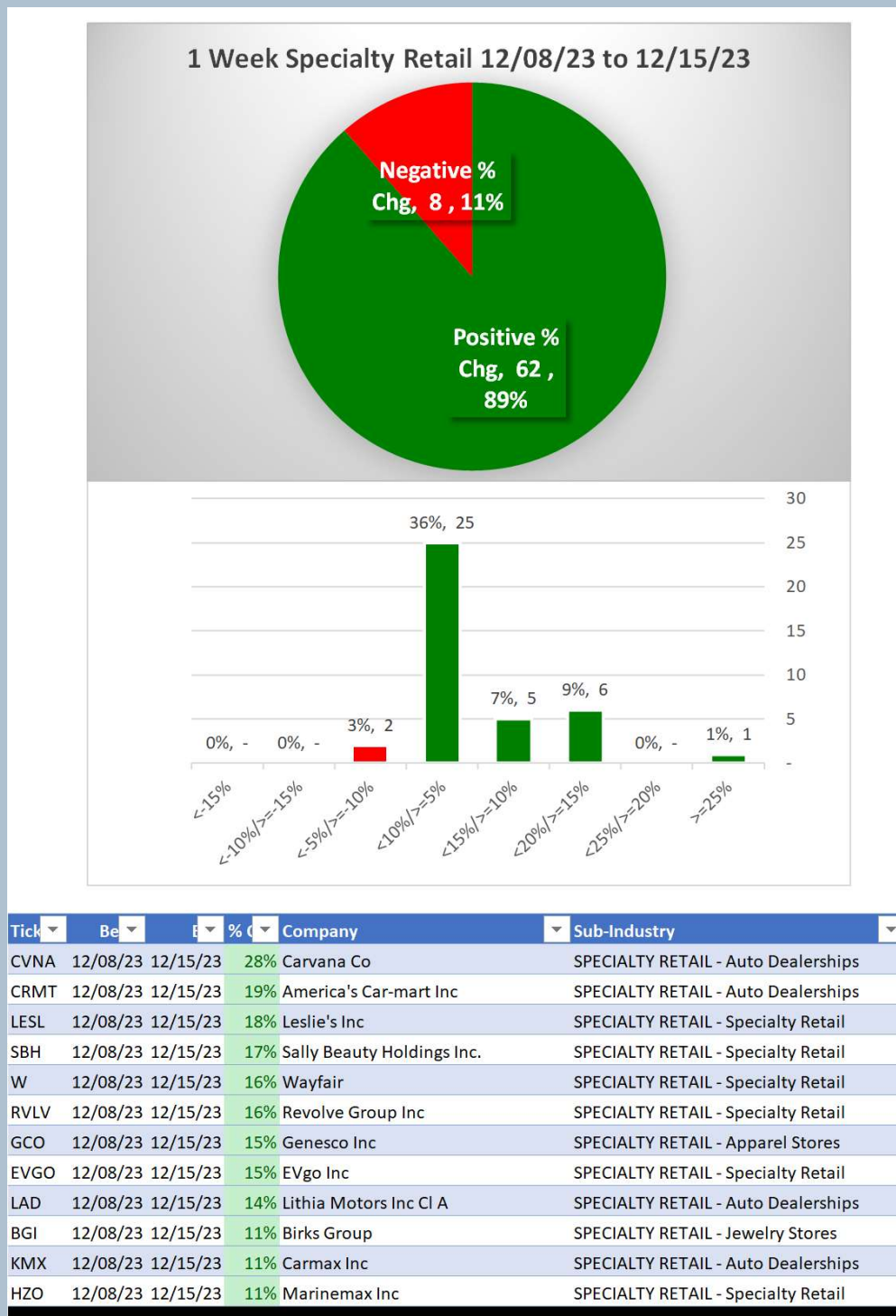
Tick	Be	12/15/23	% Chg	Company	Sub-Industry
CVNA	11/17/23	12/15/23	60%	Carvana Co	SPECIALTY RETAIL - Auto Dealerships
BBWI	11/17/23	12/15/23	40%	Bath & Body Works Inc	SPECIALTY RETAIL - Apparel Stores
SBH	11/17/23	12/15/23	39%	Sally Beauty Holdings Inc.	SPECIALTY RETAIL - Specialty Retail
FL	11/17/23	12/15/23	37%	Foot Locker Inc	SPECIALTY RETAIL - Specialty Retail
W	11/17/23	12/15/23	36%	Wayfair	SPECIALTY RETAIL - Specialty Retail
HIBB	11/17/23	12/15/23	29%	Hibbett Inc	SPECIALTY RETAIL - Sporting Goods Stores
PDD	11/17/23	12/15/23	29%	Pinduoduo Inc	SPECIALTY RETAIL - Specialty Retail
RVLV	11/17/23	12/15/23	27%	Revolve Group Inc	SPECIALTY RETAIL - Specialty Retail
SIG	11/17/23	12/15/23	27%	Signet Jewelers Limited	SPECIALTY RETAIL - Jewelry Stores
LE	11/17/23	12/15/23	25%	Lands End Inc	SPECIALTY RETAIL - Apparel Stores

SCVL	11/17/23	12/15/23	23%	Shoe Carnival Inc	SPECIALTY RETAIL - Apparel Stores
ASO	11/17/23	12/15/23	23%	Academy Sports and Outdoors Inc	SPECIALTY RETAIL - Sporting Goods Stores
DKS	11/17/23	12/15/23	23%	Dick's Sporting Goods	SPECIALTY RETAIL - Sporting Goods Stores
HZO	11/17/23	12/15/23	22%	Marinemax Inc	SPECIALTY RETAIL - Specialty Retail
PLCE	11/17/23	12/15/23	21%	Children's Place Inc	SPECIALTY RETAIL - Apparel Stores
BGFV	11/17/23	12/15/23	19%	Big 5 Sporting Goods Corp	SPECIALTY RETAIL - Sporting Goods Stores
GPS	11/17/23	12/15/23	19%	Gap Inc	SPECIALTY RETAIL - Apparel Stores
BKE	11/17/23	12/15/23	19%	Buckle Inc	SPECIALTY RETAIL - Apparel Stores
EVGO	11/17/23	12/15/23	18%	EVgo Inc	SPECIALTY RETAIL - Specialty Retail
KMX	11/17/23	12/15/23	17%	Carmax Inc	SPECIALTY RETAIL - Auto Dealerships
JWN	11/17/23	12/15/23	16%	Nordstrom Inc	SPECIALTY RETAIL - Apparel Stores
SFUX	11/17/23	12/15/23	16%	Stitch Fix Inc	SPECIALTY RETAIL - Apparel Stores
FLWS	11/17/23	12/15/23	16%	1-800-Flowers.Com Inc A	SPECIALTY RETAIL - Specialty Retail
ANF	11/17/23	12/15/23	14%	Abercrombie & Fitch Co	SPECIALTY RETAIL - Apparel Stores
LAD	11/17/23	12/15/23	14%	Lithia Motors Inc Cl A	SPECIALTY RETAIL - Auto Dealerships
DRVN	11/17/23	12/15/23	12%	Driven Brands Holdings Inc	SPECIALTY RETAIL - Auto Dealerships
RUSHA	11/17/23	12/15/23	12%	Rush Enterprises Inc Cl A	SPECIALTY RETAIL - Auto Dealerships
WISH	11/17/23	12/15/23	12%	ContextLogic Inc	SPECIALTY RETAIL - Specialty Retail
GCO	11/17/23	12/15/23	12%	Genesco Inc	SPECIALTY RETAIL - Apparel Stores
BGI	11/17/23	12/15/23	12%	Birks Group	SPECIALTY RETAIL - Jewelry Stores
LESL	11/17/23	12/15/23	12%	Leslie's Inc	SPECIALTY RETAIL - Specialty Retail
ETSY	11/17/23	12/15/23	11%	Etsy Inc	SPECIALTY RETAIL - Specialty Retail
ABG	11/17/23	12/15/23	11%	Asbury Automotive	SPECIALTY RETAIL - Auto Dealerships
CAL	11/17/23	12/15/23	10%	Caleres Inc	SPECIALTY RETAIL - Specialty Retail
BBW	11/17/23	12/15/23	-10%	Build-a-bear Workshop	SPECIALTY RETAIL - Toy & Hobby Stores
TLYS	11/17/23	12/15/23	-13%	Tilly's Inc.	SPECIALTY RETAIL - Apparel Stores
SPWH	11/17/23	12/15/23	-14%	Sportsman's Warehouse Holdings Inc	SPECIALTY RETAIL - Sporting Goods Stores
DBI	11/17/23	12/15/23	-15%	Designer Brands Inc	SPECIALTY RETAIL - Apparel Stores
JILL	11/17/23	12/15/23	-19%	J Jill Inc	SPECIALTY RETAIL - Apparel Stores
DADA	11/17/23	12/15/23	-21%	Dada Nexus Ltd	SPECIALTY RETAIL - Specialty Retail

34 stocks >+10% and 6 stocks <-10% (49% and 9% of total) 11/17/23 to 12/15/23.

3. STRENGTH BY LOOKBACK PERIOD (with Best/Worst stocks)

3C. Lookback 1 Week



12 stocks >+10% and 0 stocks <-10% (17% and 0% of total) 12/08/23 to 12/15/23.