



Industry Status: Health Services

1 week 12/11/23 to 12/18/23								
9Weakest	8VWeak	7Weaker	6Weak	5Avg	4Strong	3Stronger	2VStrong	1Strongest
.	.	.	.	135 HEALTH SVC
.	6 HCare Plans	.	.
.	4 Home HCare	.	.	.
.	.	.	.	9 Hospitals->	9 Hospitals->	.	.	.
.	3 LT Care Facil
.	.	.	46 Med Appl/Equip->	46 Med Appl/Equip->
.	.	.	38 Med Instrmts->	38 Med Instrmts->
.	.	.	.	15 Med Lab/Rsrch->	15 Med Lab/Rsrch->	.	.	.
.	.	.	.	14 Spclz Hlth Svc
.

December 18, 2023

UNCHANGED at AVERAGE strength rating
(5th strongest of 9 levels)
previous move was UP

4/8 sub-industries strengthened, 81% stocks positive, GKOS/VRDN/CYH +26%/25%/22%, LNTN -28%



Table of Contents

1	1. INDUSTRY OVERVIEW	
		1A. Performance
		1B. Background
2	2. SUB-INDUSTRIES AND STOCK DETAIL	
		2A. Sub-Industries Overview
		2B. Sub-Industries 10-Week Strengthening Analysis
		2C. Stocks 1 Week Strongest and Weakest
5	3. STRENGTH BY LOOKBACK PERIOD (with Best/Worst stocks)	
		3A. Lookback 3 Months
		3B. Lookback 4 weeks
		3C. Lookback 1 Week

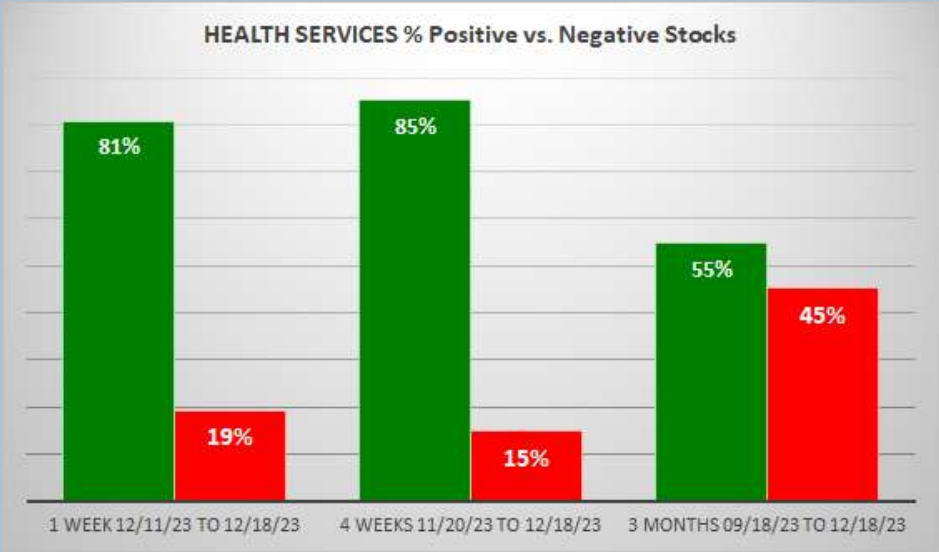
1. INDUSTRY OVERVIEW

1A. Performance

Past 10 Weeks Strengthening/Weakening week-by-week, per the following chart:

9Weakest	8VWeak	7Weaker	6Weak	5Avg	4Strong	3Stronger	2VStrong	1Strongest	Period
.	.	.	.	135 HEALTH SVC	7 Days - 12/11/23 to 12/18/23
.	.	.	.	135 HEALTH SVC	7 Days - 12/04/23 to 12/11/23
.	.	.	135 HEALTH SVC-> 135 HEALTH SVC->	7 Days - 11/27/23 to 12/04/23
.	.	.	135 HEALTH SVC	7 Days - 11/20/23 to 11/27/23
.	.	135 HEALTH SVC-> 135 HEALTH SVC->	7 Days - 11/13/23 to 11/20/23
.	.	135 HEALTH SVC	7 Days - 11/06/23 to 11/13/23
.	.	135 HEALTH SVC	7 Days - 10/30/23 to 11/06/23
.	.	135 HEALTH SVC	7 Days - 10/23/23 to 10/30/23
.	.	135 HEALTH SVC	7 Days - 10/16/23 to 10/23/23
.	.	135 HEALTH SVC	7 Days - 10/09/23 to 10/16/23

Mixed/WEAKENING 1 Week vs. Mid- and Longer-Term // 1 week positive/negative stocks ratio is LOWER than 4 weeks but HIGHER than 3 Months, per the following chart:



1B. Background

Largest of 8 sub-industries (135 stocks, average 17):

- * Medical Appliances & Equipment (46 stocks)
- * Medical Instruments & Supplies (38 stocks)
- * Medical Laboratories & Research (15 stocks)
- * Specialized Health Services (14 stocks)

Top 10 by Market Capitalization:

UNH/UnitedHealth Group Inc., TMO/Thermo Fisher Scientific Inc, ABT/Abbott Laboratories, SYK/Stryker Corp, MDT/Medtronic PLC, ELV/Elevance Health Inc., ISRG/Intuitive Surgical Inc, CI/Cigna Corp, BSX/Boston Scientific Corp, BDX/Becton Dickinson & Co

2. SUB-INDUSTRIES AND STOCKS DETAIL

2A. Sub-Industries Overview

Strengthened: 4/8 sub-industries

Weakened: 0/8 sub-industries

STRONGEST at Strongest rating/1st strongest of 9 levels:

- * Long-Term Care Facilities (3 stocks)

WEAKEST at Average rating/5th strongest of 9 levels:

- * Medical Appliances & Equipment (46 stocks)
- * Medical Instruments & Supplies (38 stocks)
- * Specialized Health Services (14 stocks)

2B. Sub-Industries 10-Week Strengthening Analysis

What: recent week-by-week strength changes for the industry and its sub-industries
Why: objective measurement of strengthening and weakening enabling comparison within and across industries and sub-industries

INDUSTRY CURRENT PERIOD SUMMARY										1 week 12/11/23 to 12/18/23									
length - Begin/End	Industry/Sub-Industry	Period	#	Min	Avg	Max	Status	7Weakest	8VWeek	7Weaker	6Week	5Avg	4Strong	3Stronger	2Vstrong	1Strongest			
7 Days - 12/11/23 to 12/18/23	HEALTH SERVICES	Period 1 of 10 (Current)	135	-23%	-1%	26%	Strengthened					135 HEALTH SVC							
7 Days - 12/11/23 to 12/18/23	HEALTH SERVICES - Health Care Plans	Period 1 of 10 (Current)	135	-23%	-1%	26%	1 Weakened							6 HCare Plans					
7 Days - 12/11/23 to 12/18/23	HEALTH SERVICES - Home Health Care	Period 1 of 10 (Current)	4	-1%	1%	2%	2 Unchanged							4 Home HCare					
7 Days - 12/11/23 to 12/18/23	HEALTH SERVICES - Hospitals	Period 1 of 10 (Current)	9	-1%	5%	22%	Strengthened					9 Hospitals->	9 Hospitals->						
7 Days - 12/11/23 to 12/18/23	HEALTH SERVICES - Long-Term Care Facilities	Period 1 of 10 (Current)	3	-4%	5%	5%	Unchanged									3 LT Care Faci			
7 Days - 12/11/23 to 12/18/23	HEALTH SERVICES - Medical Appliances & Equipment	Period 1 of 10 (Current)	46	-10%	6%	20%	Strengthened					46 Med Appl/Eqp->	46 Med Appl/Eqp->						
7 Days - 12/11/23 to 12/18/23	HEALTH SERVICES - Medical Instruments & Supplies	Period 1 of 10 (Current)	38	-4%	6%	26%	Strengthened					38 Med Instrmnts->	38 Med Instrmnts->						
7 Days - 12/11/23 to 12/18/23	HEALTH SERVICES - Medical Laboratories & Research	Period 1 of 10 (Current)	15	-23%	4%	25%	Strengthened					15 Med Lab/Rsrch->	15 Med Lab/Rsrch->	15 Med Lab/Rsrch->	15 Med Lab/Rsrch->				
7 Days - 12/11/23 to 12/18/23	HEALTH SERVICES - Specialized Health Services	Period 1 of 10 (Current)	14	-5%	1%	9%	Strengthened					14 Splct Hlth Svc							
7 Days - 12/11/23 to 12/18/23		Period 1 of 10 (Current)																	
PREVIOUS WEEKS (EDUCATIONAL PURPOSES ONLY/NOT A STOCK OR INVESTMENT RECOMMENDATION)																			
length - Begin/End	Industry/Sub-Industry	Period	#	Min	Avg	Max	Status	7Weakest	8VWeek	7Weaker	6Week	5Avg	4Strong	3Stronger	2Vstrong	1Strongest			
7 Days - 12/11/23 to 12/18/23	HEALTH SERVICES	Period 1 of 10 (Current)	135	-23%	-1%	26%	Strengthened					135 HEALTH SVC							
7 Days - 12/04/23 to 12/11/23	HEALTH SERVICES	Period 2 of 10	135	-23%	-1%	15%	Unchanged					135 HEALTH SVC							
7 Days - 11/27/23 to 12/04/23	HEALTH SERVICES	Period 3 of 10	135	-23%	-1%	44%	Strengthened					135 HEALTH SVC->	135 HEALTH SVC->						
7 Days - 11/20/23 to 11/27/23	HEALTH SERVICES	Period 4 of 10	135	-20%	1%	41%	Strengthened					135 HEALTH SVC							
7 Days - 11/13/23 to 11/20/23	HEALTH SERVICES	Period 5 of 10	135	-23%	8%	53%	Strengthened					135 HEALTH SVC->	135 HEALTH SVC->						
7 Days - 11/06/23 to 11/13/23	HEALTH SERVICES	Period 6 of 10	135	-44%	-2%	48%	Unchanged					135 HEALTH SVC							
7 Days - 10/30/23 to 11/06/23	HEALTH SERVICES	Period 7 of 10	135	-10%	6%	26%	Strengthened					135 HEALTH SVC							
7 Days - 10/23/23 to 10/30/23	HEALTH SERVICES	Period 8 of 10	135	-10%	4%	10%	Unchanged					135 HEALTH SVC							
7 Days - 10/16/23 to 10/23/23	HEALTH SERVICES	Period 9 of 10	135	-21%	-3%	12%	1 Weakened					135 HEALTH SVC							
7 Days - 10/09/23 to 10/16/23	HEALTH SERVICES	Period 10 of 10	135	-48%	-3%	17%	Unchanged					135 HEALTH SVC							
7 Days - 12/11/23 to 12/18/23	HEALTH SERVICES - Health Care Plans	Period 1 of 10 (Current)	6	-3%	-2%	1%	1 Weakened							6 HCare Plans->					
7 Days - 12/04/23 to 12/11/23	HEALTH SERVICES - Health Care Plans	Period 2 of 10	6	-3%	2%	15%	Strengthened							6 HCare Plans->	6 HCare Plans->				
7 Days - 11/27/23 to 12/04/23	HEALTH SERVICES - Health Care Plans	Period 3 of 10	6	-8%	-2%	1%	1 Weakened							<-HCare Plans 6	<-HCare Plans 6				
7 Days - 11/20/23 to 11/27/23	HEALTH SERVICES - Health Care Plans	Period 4 of 10	6	1%	2%	3%	Strengthened							6 HCare Plans					
7 Days - 11/13/23 to 11/20/23	HEALTH SERVICES - Health Care Plans	Period 5 of 10	6	-1%	1%	1%	1 Weakened							6 HCare Plans					
7 Days - 11/06/23 to 11/13/23	HEALTH SERVICES - Health Care Plans	Period 6 of 10	6	-4%	1%	4%	Unchanged							6 HCare Plans->	6 HCare Plans->				
7 Days - 10/30/23 to 11/06/23	HEALTH SERVICES - Health Care Plans	Period 7 of 10	6	-6%	1%	6%	Strengthened							6 HCare Plans					
7 Days - 10/23/23 to 10/30/23	HEALTH SERVICES - Health Care Plans	Period 8 of 10	6	-5%	-1%	2%	Unchanged							6 HCare Plans					
7 Days - 10/16/23 to 10/23/23	HEALTH SERVICES - Health Care Plans	Period 9 of 10	6	-4%	-2%	0%	1 Weakened							<-HCare Plans 6	<-HCare Plans 6				
7 Days - 10/09/23 to 10/16/23	HEALTH SERVICES - Health Care Plans	Period 10 of 10	6	-2%	0%	8%	Strengthened							6 HCare Plans->	6 HCare Plans->				
7 Days - 12/11/23 to 12/18/23	HEALTH SERVICES - Home Health Care	Period 1 of 10 (Current)	4	-1%	1%	2%	Unchanged							4 Home HCare					
7 Days - 12/04/23 to 12/11/23	HEALTH SERVICES - Home Health Care	Period 2 of 10	4	-1%	1%	1%	Strengthened					4 Home HCare->	4 Home HCare->						
7 Days - 11/27/23 to 12/04/23	HEALTH SERVICES - Home Health Care	Period 3 of 10	4	-1%	1%	3%	1 Weakened					4 Home HCare							
7 Days - 11/20/23 to 11/27/23	HEALTH SERVICES - Home Health Care	Period 4 of 10	4	0%	0%	1%	Unchanged					4 Home HCare							
7 Days - 11/13/23 to 11/20/23	HEALTH SERVICES - Home Health Care	Period 5 of 10	4	-2%	1%	7%	Strengthened					4 Home HCare							
7 Days - 11/06/23 to 11/13/23	HEALTH SERVICES - Home Health Care	Period 6 of 10	4	-3%	0%	1%	Strengthened					4 Home HCare->	4 Home HCare->						
7 Days - 10/30/23 to 11/06/23	HEALTH SERVICES - Home Health Care	Period 7 of 10	4	-1%	1%	4%	Unchanged					4 Home HCare							
7 Days - 10/23/23 to 10/30/23	HEALTH SERVICES - Home Health Care	Period 8 of 10	4	-1%	0%	1%	Unchanged					4 Home HCare							
7 Days - 10/16/23 to 10/23/23	HEALTH SERVICES - Home Health Care	Period 9 of 10	4	-2%	-1%	0%	0 Weakened					<-Home HCare 4	<-Home HCare 4						
7 Days - 10/09/23 to 10/16/23	HEALTH SERVICES - Home Health Care	Period 10 of 10	4	-2%	-1%	1%	1 Strengthened					4 Home HCare							
7 Days - 12/11/23 to 12/18/23	HEALTH SERVICES - Hospitals	Period 1 of 10 (Current)	9	-1%	5%	22%	Strengthened					9 Hospitals->	9 Hospitals->						
7 Days - 12/04/23 to 12/11/23	HEALTH SERVICES - Hospitals	Period 2 of 10	9	-6%	-1%	3%	1 Weakened					9 Hospitals							
7 Days - 11/27/23 to 12/04/23	HEALTH SERVICES - Hospitals	Period 3 of 10	9	-5%	2%	9%	Strengthened					9 Hospitals->	9 Hospitals->						
7 Days - 11/20/23 to 11/27/23	HEALTH SERVICES - Hospitals	Period 4 of 10	9	-4%	1%	4%	Unchanged					9 Hospitals							
7 Days - 11/13/23 to 11/20/23	HEALTH SERVICES - Hospitals	Period 5 of 10	9	-5%	10%	18%	Strengthened					9 Hospitals->	9 Hospitals->						
7 Days - 11/06/23 to 11/13/23	HEALTH SERVICES - Hospitals	Period 6 of 10	9	-20%	-1%	7%	Strengthened			9 Hospitals->	9 Hospitals->	9 Hospitals->	9 Hospitals->						
7 Days - 10/30/23 to 11/06/23	HEALTH SERVICES - Hospitals	Period 7 of 10	9	-3%	6%	18%	Strengthened		9 Hospitals->	9 Hospitals->									
7 Days - 10/23/23 to 10/30/23	HEALTH SERVICES - Hospitals	Period 8 of 10	9	-17%	-4%	2%	1 Weakened		<-Hospitals 9	<-Hospitals 9									
7 Days - 10/16/23 to 10/23/23	HEALTH SERVICES - Hospitals	Period 9 of 10	9	-6%	-2%	1%	Unchanged		<-Hospitals 9	<-Hospitals 9									
7 Days - 10/09/23 to 10/16/23	HEALTH SERVICES - Hospitals	Period 10 of 10	9	-12%	-4%	-1%	1 Weakened				9 Hospitals								
7 Days - 12/11/23 to 12/18/23	HEALTH SERVICES - Long-Term Care Facilities	Period 1 of 10 (Current)	3	-4%	5%	5%	Unchanged									3 LT Care Faci			
7 Days - 12/04/23 to 12/11/23	HEALTH SERVICES - Long-Term Care Facilities	Period 2 of 10	3	-2%	1%	3%	Unchanged									3 LT Care Faci			
7 Days - 11/27/23 to 12/04/23	HEALTH SERVICES - Long-Term Care Facilities	Period 3 of 10	3	1%	5%	12%	Unchanged									3 LT Care Faci			
7 Days - 11/20/23 to 11/27/23	HEALTH SERVICES - Long-Term Care Facilities	Period 4 of 10	3	-6%	-2%	1%	1 Unchanged									3 LT Care Faci			
7 Days - 11/13/23 to 11/20/23	HEALTH SERVICES - Long-Term Care Facilities	Period 5 of 10	3	5%	16%	35%	Strengthened								3 LT Care Faci->	3 LT Care Faci->			
7 Days - 11/06/23 to 11/13/23	HEALTH SERVICES - Long-Term Care Facilities	Period 6 of 10	3	-1%	2%	5%	Unchanged												
7 Days - 10/30/23 to 11/06/23	HEALTH SERVICES - Long-Term Care Facilities	Period 7 of 10	3	2%	6%	8%	Strengthened					3 LT Care Faci->	3 LT Care Faci->	3 LT Care Faci->	3 LT Care Faci->				
7 Days - 10/23/23 to 10/30/23	HEALTH SERVICES - Long-Term Care Facilities	Period 8 of 10	3	-2%	3%	3%	Unchanged					<-LT Care Faci 3	<-LT Care Faci 3	<-LT Care Faci 3	<-LT Care Faci 3				
7 Days - 10/16/23 to 10/23/23	HEALTH SERVICES - Long-Term Care Facilities	Period 9 of 10	3	-3%	-3%	0%	0 Weakened					<-LT Care Faci 3	<-LT Care Faci 3	<-LT Care Faci 3	<-LT Care Faci 3				
7 Days - 10/09/23 to 10/16/23	HEALTH SERVICES - Long-Term Care Facilities	Period 10 of 10	3	-2%	3%	10%	Strengthened									3 LT Care Faci			
7 Days - 12/11/23 to 12/18/23	HEALTH SERVICES - Medical Appliances & Equipment	Period 1 of 10 (Current)	46	-10%	6%	20%	Strengthened					46 Med Appl/Eqp->	46 Med Appl/Eqp->						
7 Days - 12/04/23 to 12/11/23	HEALTH SERVICES - Medical Appliances & Equipment	Period 2 of 10	46	-17%	0%	12%	Unchanged					46 Med Appl/Eqp							
7 Days - 11/27/23 to 12/04/23	HEALTH SERVICES - Medical Appliances & Equipment	Period 3 of 10	46	-13%	4%	44%	Strengthened					46 Med Appl/Eqp							
7 Days - 11/20/23 to 11/27/23	HEALTH SERVICES - Medical Appliances & Equipment	Period 4 of 10	46	-20%	1%	24%	Strengthened					46 Med Appl/Eqp							
7 Days - 11/13/23 to 11/20/23	HEALTH SERVICES - Medical Appliances & Equipment	Period 5 of 10	46	-23%	10%	42%	Strengthened					46 Med Appl/Eqp->	46 Med Appl/Eqp->						
7 Days - 11/06/23 to 11/13/23	HEALTH SERVICES - Medical Appliances & Equipment	Period 6 of 10	46	-44%	-5%	48%	Unchanged					46 Med Appl/Eqp							
7 Days - 10/30/23 to 11/06/23	HEALTH SERVICES - Medical Appliances & Equipment	Period 7 of 10	46	-11%	6%	21%	Strengthened					46 Med Appl/Eqp							
7 Days - 10/23/23 to 10/30/23	HEALTH SERVICES - Medical Appliances & Equipment	Period 8 of 10	46	-30%	-2%	18%	Strengthened					46 Med Appl/Eqp							
7 Days - 10/16/23 to 10/23/23	HEALTH SERVICES - Medical Appliances & Equipment	Period 9 of 10	46	-14%	-3%	9%	1 Weakened					46 Med Appl/Eqp							
7 Days - 10/09/23 to 10/16/23	HEALTH SERVICES - Medical Appliances & Equipment	Period 10 of 10	46	-48%	-6%	17%	Unchanged					46 Med Appl/Eqp							
7 Days - 12/11/23 to 12/18/23	HEALTH SERVICES - Medical Instruments & Supplies	Period 1 of 10 (Current)	38	-4%	6%	26%	Strengthened					38 Med Instrmnts->	38 Med Instrmnts->						
7 Days - 12/04/23 to 12/11/23	HEALTH SERVICES - Medical Instruments & Supplies	Period 2 of 10	38	-4%	1%	12%	1 Weakened					38 Med Instrmnts							
7 Days - 11/27/23 to 12/04/23	HEALTH SERVICES - Medical Instruments & Supplies	Period 3 of 10	38	-27%	2%	16%	Strengthened					38 Med Instrmnts->	38 Med Instrmnts->						
7 Days - 11/20/23 to 11/27/23	HEALTH SERVICES - Medical Instruments & Supplies	Period 4 of 10	38	-9%	2%	41%	Strengthened					38 Med Instrmnts							
7 Days - 11/13/23 to 11/20/23	HEALTH SERVICES - Medical Instruments & Supplies	Period 5 of 10	38	-4%	8%	53%	Strengthened					38 Med Instrmnts							
7 Days - 11/06/23 to 11/13/23	HEALTH SERVICES - Medical Instruments & Supplies	Period 6 of 10	38	-41%	3%	16%	Unchanged					38 Med Instrmnts							
7 Days - 10/30/23 to 11/06/23	HEALTH SERVICES - Medical Instruments & Supplies	Period 7 of 10	38	-10%	6%	23%	Strengthened					38 Med Instrmnts							
7 Days - 10/23/23 to 10/30/23	HEALTH SERVICES - Medical Instruments & Supplies	Period 8 of 10	38	-31%	5%	11%	Unchanged					38 Med Instrmnts							
7 Days - 10/16/23 to 10/23/23	HEALTH SERVICES - Medical Instruments & Supplies	Period 9 of 10	38	-21%	-3%	12%	1 Weakened					38 Med Instrmnts							
7 Days - 10/09/23 to 10/16/23	HEALTH SERVICES - Medical Instruments & Supplies	Period 10 of 10	38	-20%	-3%	7%	1 Weakened					38 Med Instrmnts							
7 Days - 12/11/23 to 12/18/23	HEALTH SERVICES - Medical Laboratories & Research	Period 1 of 10 (Current)	15	-23%	4%	25%	Strengthened					15 Med Lab/Rsrch->	15 Med Lab/Rsrch->						
7 Days - 12/04/23 to 12/11/23	HEALTH SERVICES - Medical Laboratories & Research	Period 2 of 10	15	-6%	-2%	3%	1 Weakened					15 Med Lab/Rsrch							
7 Days - 11/27/23 to 12/04/23	HEALTH SERVICES - Medical Laboratories & Research	Period 3 of 10	15	-1%	4%	12%	Strengthened					15 Med Lab/Rsrch							
7 Days - 11/20/23 to 11/27/23	HEALTH SERVICES - Medical Laboratories & Research	Period 4 of 10	15	-10%	10%	10%	Unchanged					15 Med Lab/Rsrch							
7 Days - 11/13/23 to 11/20/23	HEALTH SERVICES - Medical Laboratories & Research	Period 5 of 10	15	1%	9%	22%	Strengthened					15 Med Lab/Rsrch->	15 Med Lab/Rsrch->						
7 Days - 11/06/23 to 11/13/23	HEALTH SERVICES - Medical Laboratories & Research	Period 6 of 10	15	-10%	2%	22%	Strengthened					15 Med Lab/Rsrch->	15 Med Lab/Rsrch->						
7 Days - 10/30/23 to 11/06/23	HEALTH SERVICES - Medical Laboratories & Research	Period 7 of 10	15	3%	8%	26%	Strengthened					15 Med Lab/Rsrch							
7 Days - 10/23/23 to 10/30/23	HEALTH SERVICES - Medical Laboratories & Research	Period 8 of 10	15	-20%	-2%	17%	Strengthened					15 Med Lab/Rsrch							
7 Days - 10/16/23 to 10/23/23	HEALTH SERVICES - Medical Laboratories & Research	Period 9 of 10	15	-10%	-4%	8%	1 Weakened												

Green Highlight: Strengthened

Red Highlight: Weakened

No Highlight: Unchanged

3

December 18, 2023

For educational purposes only. Not a stock or investment recommendation.

2C. Stocks 1 Week Strongest and Weakest

What: stocks currently rated Strongest/Weakest (highest/lowest of 9 strength ratings)

Why: most interesting stocks for available capital because

- the Strongest have the least amount of overhead supply to dampen breakouts while
- the Weakest may be prone to volatility, subject to big pops from bottom-fishing and short-covering BUT ALSO to bigger and faster falls.

(Not guaranteed and not a recommendation – weak stocks in weakening sub-industries may be better shorts than high-flyers.)

STOCK DETAIL (EDUCATIONAL PURPOSES ONLY/NOT FINANCIAL ADVICE)										1 week 12/11/23 to 12/18/23							
Sub-Industry	Ticker	Company	ID1	ID2	% Chg	ID3	Status	9Weakest	8Weak	7Weaker	6Weak	5Avg	4Strong	3Stronger	2VStrong	1Strongest	
HEALTH SERVICES - Health Care Plans	CNC	Centene Corp	15-39-51	59%	1%	10%	1Strongest									CNC	
HEALTH SERVICES - Health Care Plans	MOH	Molina Healthcare Inc	15-39-51	94%	0%	17%	1Strongest									MOH	
HEALTH SERVICES - Health Care Plans	CI	Cigna Corp	15-39-51	77%	-3%	5%	1Strongest									CI	
HEALTH SERVICES - Home Health Care	AMED	Amedys Inc	15-45-51	10%	1%	8%	1Strongest									AMED	
HEALTH SERVICES - Home Health Care	CHE	Chemed Corp	15-45-51	96%	1%	7%	1Strongest									CHE	
HEALTH SERVICES - Long-Term Care Facilities	NHC	National Healthcare Corp	15-15-51	100%	5%	46%	1Strongest									NHC	
HEALTH SERVICES - Long-Term Care Facilities	BKD	Brookdale Senior Living Inc	15-15-51	57%	4%	43%	1Strongest									BKD	
HEALTH SERVICES - Long-Term Care Facilities	ENSG	Ensign Group	15-15-51	100%	4%	16%	1Strongest									ENSG	
HEALTH SERVICES - Medical Appliances & Equipment	NPCE	Neuropace Inc	11-51-51	32%	14%	61%	1Strongest							NPCE-->	NPCE-->	NPCE-->	
HEALTH SERVICES - Medical Appliances & Equipment	MDXG	Mimedx Group Inc	15-51-51	48%	9%	41%	1Strongest									MDXG	
HEALTH SERVICES - Medical Appliances & Equipment	ITGR	Integer Holdings Corporation	15-51-51	96%	5%	18%	1Strongest									ITGR	
HEALTH SERVICES - Medical Appliances & Equipment	AXNX	Axonics Inc	11-51-51	68%	4%	7%	1Strongest						AXNX-->	AXNX-->	AXNX-->	AXNX-->	
HEALTH SERVICES - Medical Appliances & Equipment	AORT	Artivion Inc	11-51-51	37%	1%	21%	1Strongest								AORT-->	AORT-->	
HEALTH SERVICES - Medical Appliances & Equipment	BSX	Boston Scientific Corp	15-51-51	97%	0%	7%	1Strongest									BSX	
HEALTH SERVICES - Medical Appliances & Equipment	MSA	MSA Safety Inc	15-51-51	81%	-2%	7%	1Strongest									MSA	
HEALTH SERVICES - Medical Appliances & Equipment	CUTR	Cutera Inc	95-51-51	1%	19%	81%	9Weakest		CUTR								
HEALTH SERVICES - Medical Appliances & Equipment	XAIR	Beyond Air Inc	95-51-51	2%	19%	58%	9Weakest		XAIR								
HEALTH SERVICES - Medical Appliances & Equipment	TELA	TELA Bio Inc	95-51-51	6%	5%	36%	9Weakest		TELA								
HEALTH SERVICES - Medical Appliances & Equipment	ESTA	Establishment Labs Holdings Inc	95-51-51	19%	0%	59%	9Weakest		ESTA								
HEALTH SERVICES - Medical Appliances & Equipment	PROF	Profound Medical Corp	99-51-51	22%	-10%	19%	9Weakest	<--PROF	<--PROF	<--PROF							
HEALTH SERVICES - Medical Instruments & Supplies	GKOS	Glaukos Corp	11-51-51	74%	26%	23%	1Strongest			GKOS-->	GKOS-->	GKOS-->	GKOS-->	GKOS-->	GKOS-->	GKOS-->	
HEALTH SERVICES - Medical Instruments & Supplies	OSUR	Orasure Technologies Inc	15-51-51	29%	8%	29%	1Strongest									OSUR	
HEALTH SERVICES - Medical Instruments & Supplies	PLSE	Pulse Biosciences Inc	15-51-51	20%	6%	65%	1Strongest									PLSE	
HEALTH SERVICES - Medical Instruments & Supplies	INFU	Infusystems Holdings Inc	15-51-51	32%	-1%	7%	1Strongest									INFU	
HEALTH SERVICES - Medical Instruments & Supplies	APYX	Apix Medical Corporation	95-51-51	6%	6%	42%	9Weakest	APYX									
HEALTH SERVICES - Medical Instruments & Supplies	ATRC	AtriCure Inc	95-51-51	18%	5%	20%	9Weakest	ATRC									
HEALTH SERVICES - Medical Instruments & Supplies	NVST	Envista Holdings Corp	95-51-51	29%	2%	26%	9Weakest	NVST									
HEALTH SERVICES - Medical Instruments & Supplies	STAA	Staar Surgical Co	95-51-51	7%	1%	35%	9Weakest	STAA									
HEALTH SERVICES - Medical Instruments & Supplies	KRMD	Repro-Med Systems Inc.	95-51-51	7%	-1%	27%	9Weakest	KRMD									
HEALTH SERVICES - Medical Laboratories & Research	ICLR	Icon Plc Ads	15-41-51	85%	2%	18%	1Strongest									ICLR	
HEALTH SERVICES - Medical Laboratories & Research	NEO	Neogenomics Inc	11-41-51	23%	1%	17%	1Strongest								NEO-->	NEO-->	
HEALTH SERVICES - Medical Laboratories & Research	RDNT	RadNet Inc.	15-41-51	93%	0%	21%	1Strongest									RDNT	
HEALTH SERVICES - Medical Laboratories & Research	LNTH	Lantheus Holdings Inc	99-41-51	51%	-23%	28%	9Weakest	<--LNTH	<--LNTH	<--LNTH	<--LNTH						
HEALTH SERVICES - Specialized Health Services	ACHC	Acadia Healthcare Company Inc	11-51-51	83%	1%	3%	1Strongest							ACHC-->	ACHC-->	ACHC-->	
HEALTH SERVICES - Specialized Health Services	EHC	Encompass Health Corp	11-51-51	48%	1%	3%	1Strongest								EHC-->	EHC-->	
HEALTH SERVICES - Specialized Health Services	MD	Mednax Incorporated	95-51-51	3%	-5%	33%	9Weakest	MD									

Strongest to Weakest stocks ratio is 24:12 (18% and 9% of total) 12/11/23 to 12/18/23.

Green Highlight: Strengthened

Red Highlight: Weakened

No Highlight: Unchanged

3. STRENGTH BY LOOKBACK PERIOD (with Best/Worst stocks)

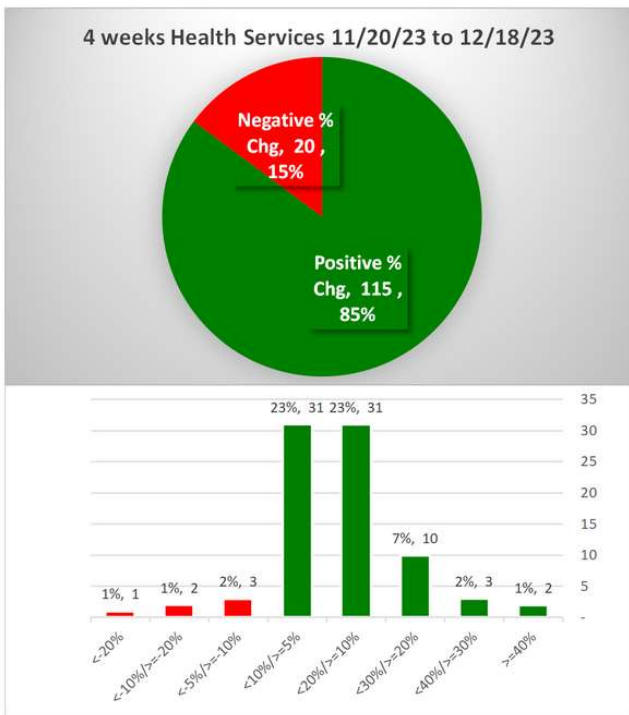
3A. Lookback 3 Months



20 stocks >+20% and 14 stocks <-20% (15% and 10% of total) 09/18/23 to 12/18/23.

3. STRENGTH BY LOOKBACK PERIOD (with Best/Worst stocks)

3B. Lookback 4 Weeks

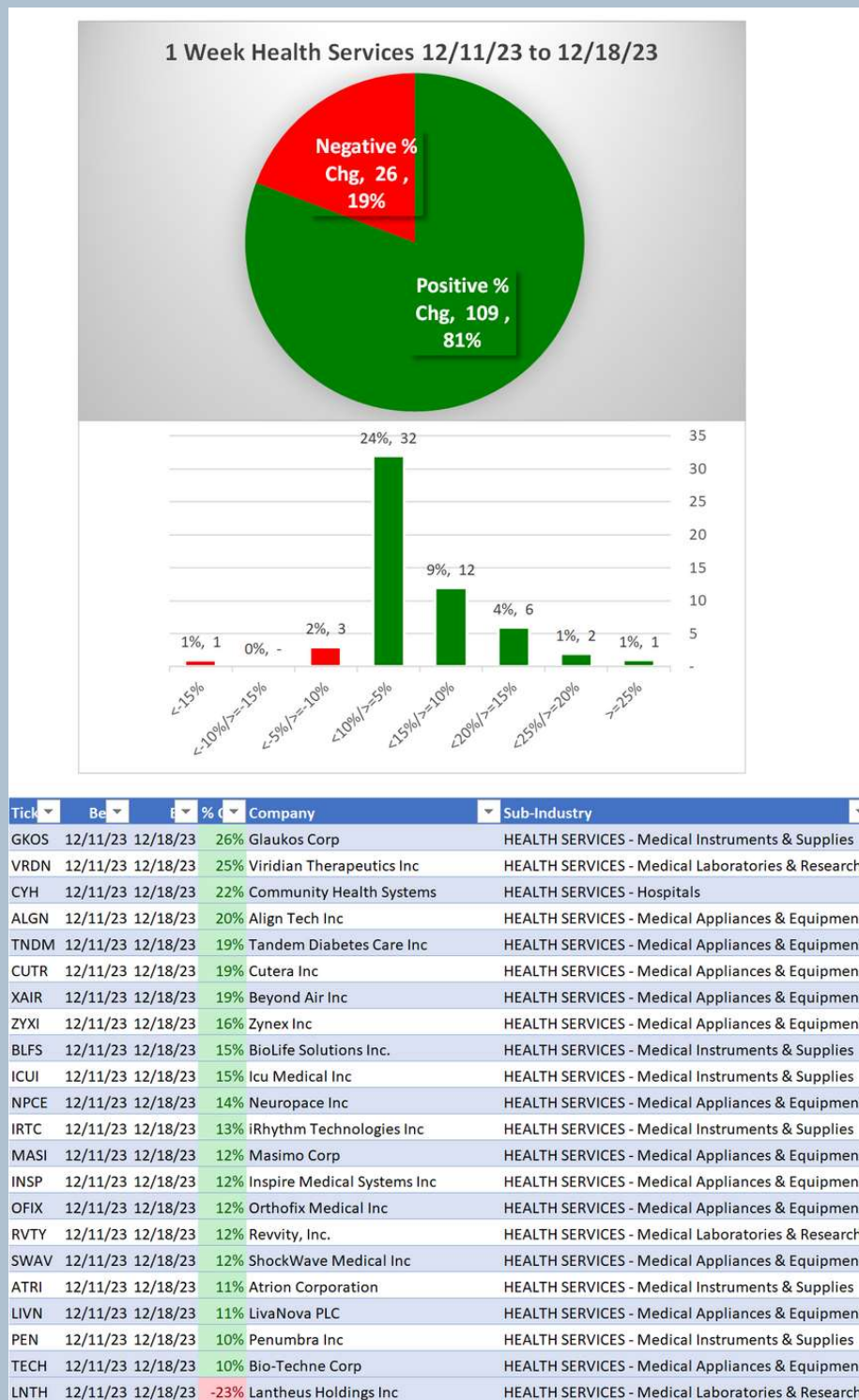


MASI	11/20/23	12/18/23	22%	Masimo Corp	HEALTH SERVICES - Medical Appliances & Equipment
ALGN	11/20/23	12/18/23	22%	Align Tech Inc	HEALTH SERVICES - Medical Appliances & Equipment
OFIX	11/20/23	12/18/23	21%	Orthofix Medical Inc	HEALTH SERVICES - Medical Appliances & Equipment
A	11/20/23	12/18/23	21%	Agilent Technologies Inc	HEALTH SERVICES - Medical Laboratories & Research
IRTC	11/20/23	12/18/23	20%	iRhythm Technologies Inc	HEALTH SERVICES - Medical Instruments & Supplies
TECH	11/20/23	12/18/23	20%	Bio-Techne Corp	HEALTH SERVICES - Medical Appliances & Equipment
ATEC	11/20/23	12/18/23	19%	Alphatec Holdings Inc	HEALTH SERVICES - Medical Instruments & Supplies
ATRI	11/20/23	12/18/23	19%	Atrion Corporation	HEALTH SERVICES - Medical Instruments & Supplies
TMCI	11/20/23	12/18/23	19%	Treace Medical Concepts Inc	HEALTH SERVICES - Medical Appliances & Equipment
MLAB	11/20/23	12/18/23	19%	Mesa Laboratories Inc	HEALTH SERVICES - Medical Instruments & Supplies
AXGN	11/20/23	12/18/23	18%	Axogen Inc	HEALTH SERVICES - Medical Appliances & Equipment
TFX	11/20/23	12/18/23	18%	Teleflex Inc	HEALTH SERVICES - Hospitals
IRWD	11/20/23	12/18/23	17%	Ironwood Pharmaceuticals Inc	HEALTH SERVICES - Medical Laboratories & Research
HBIO	11/20/23	12/18/23	16%	Harvard Bioscience Inc	HEALTH SERVICES - Medical Instruments & Supplies
PODD	11/20/23	12/18/23	16%	Insulet Corporation	HEALTH SERVICES - Medical Instruments & Supplies
THC	11/20/23	12/18/23	15%	Tenet Healthcare Corp	HEALTH SERVICES - Hospitals
RVTY	11/20/23	12/18/23	15%	Revvity, Inc.	HEALTH SERVICES - Medical Laboratories & Research
ZYXI	11/20/23	12/18/23	15%	Zynex Inc	HEALTH SERVICES - Medical Appliances & Equipment
XRAY	11/20/23	12/18/23	14%	Dentsply Sirona Inc	HEALTH SERVICES - Medical Instruments & Supplies
ICUI	11/20/23	12/18/23	14%	Icu Medical Inc	HEALTH SERVICES - Medical Instruments & Supplies
TELA	11/20/23	12/18/23	14%	TELA Bio Inc	HEALTH SERVICES - Medical Appliances & Equipment
DXCM	11/20/23	12/18/23	13%	DexCom Inc	HEALTH SERVICES - Medical Instruments & Supplies
MTD	11/20/23	12/18/23	13%	Mettler Toledo Intl Inc	HEALTH SERVICES - Medical Laboratories & Research
CUTR	11/20/23	12/18/23	13%	Cutera Inc	HEALTH SERVICES - Medical Appliances & Equipment
CLPT	11/20/23	12/18/23	13%	ClearPoint Neuro Inc	HEALTH SERVICES - Medical Appliances & Equipment
NARI	11/20/23	12/18/23	12%	Inari Medical Inc	HEALTH SERVICES - Medical Appliances & Equipment
RMD	11/20/23	12/18/23	12%	Resmed Inc	HEALTH SERVICES - Medical Appliances & Equipment
FONR	11/20/23	12/18/23	12%	Fonar Corp	HEALTH SERVICES - Medical Appliances & Equipment
GMED	11/20/23	12/18/23	12%	Globus Medical Inc.	HEALTH SERVICES - Medical Appliances & Equipment
EW	11/20/23	12/18/23	11%	Edwards Life Sciences	HEALTH SERVICES - Medical Appliances & Equipment
IART	11/20/23	12/18/23	11%	Integra Lifesciences Holdings Corp	HEALTH SERVICES - Medical Instruments & Supplies
TMO	11/20/23	12/18/23	11%	Thermo Fisher Scientific Inc	HEALTH SERVICES - Medical Laboratories & Research
BLFS	11/20/23	12/18/23	11%	BioLife Solutions Inc.	HEALTH SERVICES - Medical Instruments & Supplies
MDT	11/20/23	12/18/23	11%	Medtronic PLC	HEALTH SERVICES - Medical Appliances & Equipment
UHS	11/20/23	12/18/23	10%	Universal Health Svcs B	HEALTH SERVICES - Hospitals
TMDX	11/20/23	12/18/23	10%	TransMedics Group Inc	HEALTH SERVICES - Medical Appliances & Equipment
ATRC	11/20/23	12/18/23	-16%	AtriCure Inc	HEALTH SERVICES - Medical Instruments & Supplies
LNTH	11/20/23	12/18/23	-20%	Lantheus Holdings Inc	HEALTH SERVICES - Medical Laboratories & Research
PROF	11/20/23	12/18/23	-21%	Profound Medical Corp	HEALTH SERVICES - Medical Appliances & Equipment

46 stocks >+10% and 3 stocks <-10% (34% and 2% of total) 11/20/23 to 12/18/23.

3. STRENGTH BY LOOKBACK PERIOD (with Best/Worst stocks)

3C. Lookback 1 Week



21 stocks >+10% and 1 stock <-10% (16% and 1% of total) 12/11/23 to 12/18/23.