

Industry Status: Computer Software & Services

1 week 10/12/23 to 10/19/23

9Weakest	8VWeak	7Weaker	6Weak	5Avg	4Strong	3Stronger	2VStrong	1Strongest
.	.	.	.	200 SOFTWARE
.	.	.	.	94 Application
.	.	.	48 BusSW/Srv
.	.	.	8 HCareInfoSrv
.	.	.	.	<-Info/DelivSrv 5	<-Info/DelivSrv 5	.	.	.
.	.	.	24 InfoTechSrv->	24 InfoTechSrv->
.	.	.	.	6 MMdia/Grphcs
.	.	.	.	5 SecrtY S/Srv->	5 SecrtY S/Srv->	.	.	.
.	.	.	.	9 Tech/Sys SW

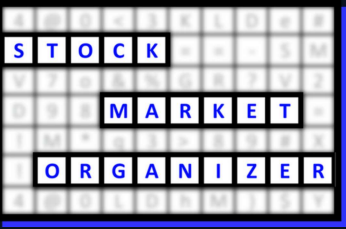
October 19, 2023

Unchanged at AVERAGE strength rating
(5th strongest of 9 levels)

previous move was UP

MSFT Strongest/1st in Application Software Average/5th

Table of Contents



1	1. INDUSTRY OVERVIEW 1A. Performance 1B. Background
2	2. SUB-INDUSTRIES AND STOCK DETAIL 2A. Sub-Industries Overview 2B. Sub-Industries 10-Week Strengthening Analysis 2C. Stocks 1 Week Strongest and Weakest
5	3. STRENGTH BY LOOKBACK PERIOD (with Best/Worst stocks) 3A. Lookback 3 Months 3B. Lookback 4 weeks 3C. Lookback 1 Week

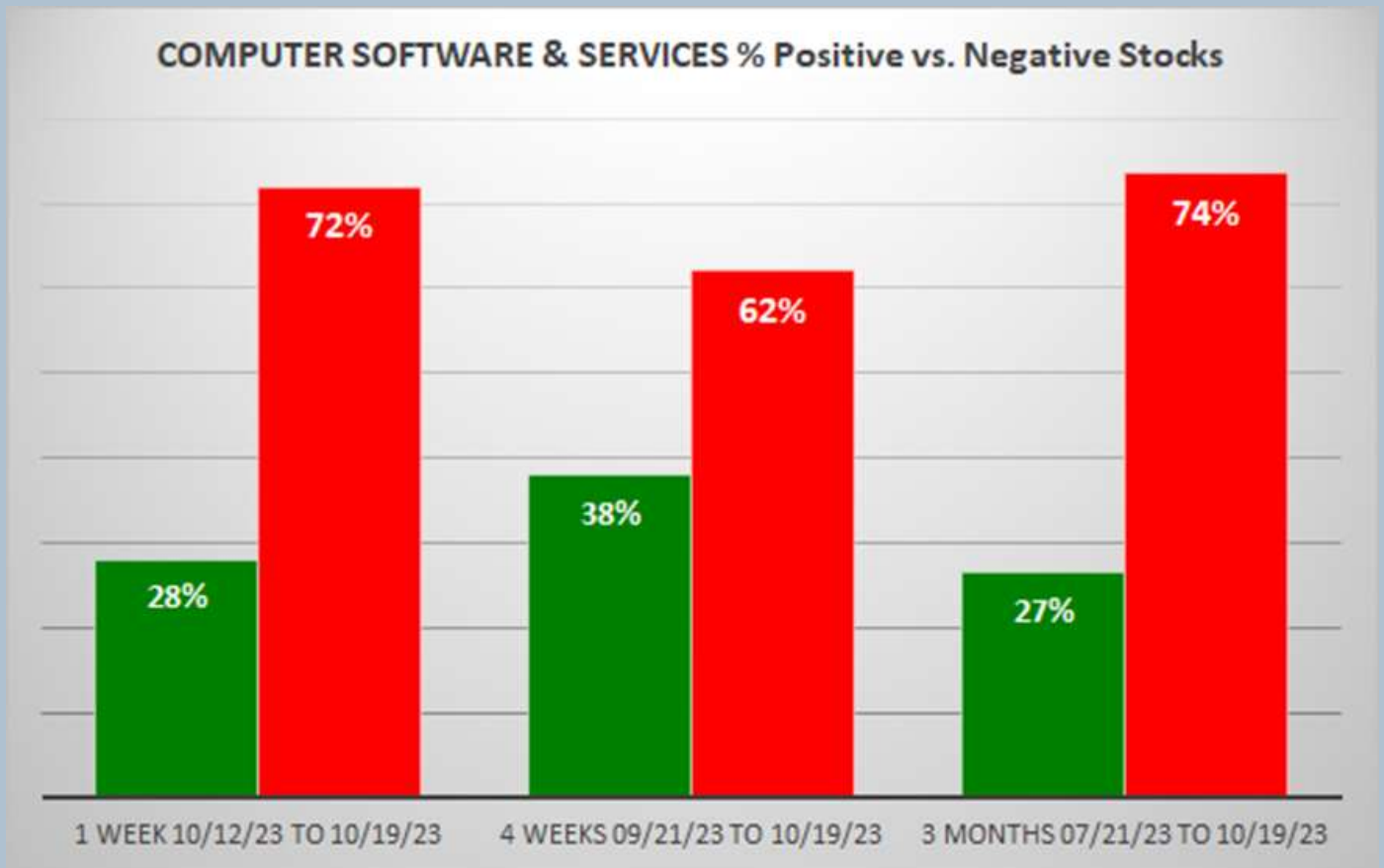
1. INDUSTRY OVERVIEW

1A. Performance

Past 10 Weeks Strengthening/Weakening week-by-week, per the following chart:

9Weakest	8VWeak	7Weaker	6Weak	5Avg	4Strong	3Stronger	2VStrong	1Strongest	Period
.	.	.	.	200 SOFTWARE	7 Days - 10/12/23 to 10/19/23
.	.	.	200 SOFTWARE->	200 SOFTWARE->	7 Days - 10/05/23 to 10/12/23
.	.	.	<-SOFTWARE 200	<-SOFTWARE 200	7 Days - 09/28/23 to 10/05/23
.	.	.	.	200 SOFTWARE	7 Days - 09/21/23 to 09/28/23
.	.	.	.	200 SOFTWARE	7 Days - 09/14/23 to 09/21/23
.	.	.	.	<-SOFTWARE 200	<-SOFTWARE 200	.	.	.	7 Days - 09/07/23 to 09/14/23
.	200 SOFTWARE	.	.	.	7 Days - 08/31/23 to 09/07/23
.	.	.	.	200 SOFTWARE->	200 SOFTWARE->	.	.	.	7 Days - 08/24/23 to 08/31/23
.	.	.	.	200 SOFTWARE	7 Days - 08/17/23 to 08/24/23
.	.	.	.	<-SOFTWARE 200	<-SOFTWARE 200	.	.	.	7 Days - 08/10/23 to 08/17/23

Mixed/WEAKENING 1 Week vs. Mid- and Longer-Term // 1 week positive/negative stocks ratio is LOWER than 4 weeks but HIGHER than 3 Months, per the following chart:



1B. Background

Largest of 8 sub-industries (200 stocks, average 25):

- * Application Software (94 stocks)
- * Business Software & Services (48 stocks)
- * Information Technology Services (24 stocks)

Top 10 by Market Capitalization:

MSFT/Microsoft Corp, ORCL/Oracle Corp, ADBE/Adobe Systems Inc, ACN/Accenture Ltd, CRM/Salesforce Inc, INTU/Intuit Inc, IBM/International Business Machines Corporation, NOW/ServiceNow Inc, ADP/Automatic Data Processing Inc, UBER/Uber Technologies

2. SUB-INDUSTRIES AND STOCKS DETAIL

2A. Sub-Industries Overview

Strengthened: 2/8 sub-industries

Weakened: 1/8 sub-industries

STRONGEST at Strong rating/4th strongest of 9 levels:

- * Security Software & Services (5 stocks)

WEAKEST at Weak rating/6th strongest of 9 levels:

- * Business Software & Services (48 stocks)
- * Healthcare Information Service (8 stocks)

2B. Sub-Industries 10-Week Strengthening Analysis

What: recent week-by-week strength changes for the industry and each underlying sub-industry

Why: objective measurement of strengthening and weakening enabling comparison within and across industries and sub-industries

INDUSTRY CURRENT PERIOD SUMMARY										1 week 10/12/23 to 10/19/23									
length - Begin/End	Industry/Sub-Industry	Period	#	Min	Avg	Max	Status	9Weekst	8VWeek	7Weeker	6Week	5Avg	4Strong	3Stronger	2VStrong	1Strongest			
7 Days - 10/12/23 to 10/19/23	COMPUTER SOFTWARE & SERVICES	Period 1 of 10 (Current)	200	-4.1%	-2%	22%	Weakened					200 SOFTWARE							
7 Days - 10/12/23 to 10/19/23	COMPUTER SOFTWARE & SERVICES - Application Software	Period 1 of 10 (Current)	94	-1.6%	-2%	8%	Weakened					94 Application							
7 Days - 10/12/23 to 10/19/23	COMPUTER SOFTWARE & SERVICES - Business Software & Service	Period 1 of 10 (Current)	48	-1.6%	-1%	22%	Unchanged					48 BusW/Srv							
7 Days - 10/12/23 to 10/19/23	COMPUTER SOFTWARE & SERVICES - Healthcare Information Ser	Period 1 of 10 (Current)	8	-9%	-2%	3%	Weakened					8 HCareInfoSrv							
7 Days - 10/12/23 to 10/19/23	COMPUTER SOFTWARE & SERVICES - Information & Delivery Sen	Period 1 of 10 (Current)	5	-7%	-3%	1%	Weakened					<-Info/DelivSrv 5							
7 Days - 10/12/23 to 10/19/23	COMPUTER SOFTWARE & SERVICES - Information Technology Ser	Period 1 of 10 (Current)	24	-9%	-1%	10%	Strengthened					24 InfoTechSrv>							
7 Days - 10/12/23 to 10/19/23	COMPUTER SOFTWARE & SERVICES - Multimedia & Graphics Sof	Period 1 of 10 (Current)	6	-5%	-2%	0%	Strengthened					6 MMdIA/Grphcs							
7 Days - 10/12/23 to 10/19/23	COMPUTER SOFTWARE & SERVICES - Security Software & Service	Period 1 of 10 (Current)	5	-5%	-3%	1%	Strengthened					5 Secry S/Srv>							
7 Days - 10/12/23 to 10/19/23	COMPUTER SOFTWARE & SERVICES - Technical & System Softwa	Period 1 of 10 (Current)	9	-1.6%	-4%	4%	Weakened					9 Tech/Sys SW							

PREVIOUS WEEKS (EDUCATIONAL PURPOSES ONLY/NOT A STOCK OR INVESTMENT RECOMMENDATION)										1 week 10/12/23 to 10/19/23									
length - Begin/End	Industry/Sub-Industry	Period	#	Min	Avg	Max	Status	9Weekst	8VWeek	7Weeker	6Week	5Avg	4Strong	3Stronger	2VStrong	1Strongest			
7 Days - 10/12/23 to 10/19/23	COMPUTER SOFTWARE & SERVICES	Period 1 of 10 (Current)	200	-4.1%	-2%	22%	Weakened					200 SOFTWARE							
7 Days - 10/05/23 to 10/12/23	COMPUTER SOFTWARE & SERVICES	Period 2 of 10	200	-4.0%	-1%	13%	Strengthened					200 SOFTWARE>							
7 Days - 09/28/23 to 10/05/23	COMPUTER SOFTWARE & SERVICES	Period 3 of 10	200	-3.6%	-2%	6%	Weakened					<-SOFTWARE 200							
7 Days - 09/21/23 to 09/28/23	COMPUTER SOFTWARE & SERVICES	Period 4 of 10	200	-3.3%	-1%	20%	Weakened					200 SOFTWARE							
7 Days - 09/14/23 to 09/21/23	COMPUTER SOFTWARE & SERVICES	Period 5 of 10	200	-2.8%	-5%	18%	Weakened					200 SOFTWARE							
7 Days - 09/07/23 to 09/14/23	COMPUTER SOFTWARE & SERVICES	Period 6 of 10	200	-1.6%	-1%	13%	Weakened					<-SOFTWARE 200							
7 Days - 08/31/23 to 09/07/23	COMPUTER SOFTWARE & SERVICES	Period 7 of 10	200	-2.5%	-1%	30%	Unchanged					<-SOFTWARE 200							
7 Days - 08/24/23 to 08/31/23	COMPUTER SOFTWARE & SERVICES	Period 8 of 10	200	-3.7%	3%	51%	Strengthened					200 SOFTWARE>							
7 Days - 08/17/23 to 08/24/23	COMPUTER SOFTWARE & SERVICES	Period 9 of 10	200	-3%	0%	18%	Strengthened					200 SOFTWARE							
7 Days - 08/10/23 to 08/17/23	COMPUTER SOFTWARE & SERVICES	Period 10 of 10	200	-1.1%	-3%	51%	Weakened					<-SOFTWARE 200							

Green Highlight: Strengthened
 Red Highlight: Weakened
 No Highlight: Unchanged



October 19, 2023

For educational purposes only. Not a stock or investment recommendation.

2C. Stocks 1 Week Strongest and Weakest

What: stocks currently rated Strongest/Weakest (highest/lowest of 9 strength ratings)

Why: most interesting stocks for available capital because

- the Strongest have the least amount of overhead supply to dampen breakouts while
- the Weakest may be prone to volatility, subject to big pops from bottom-fishing and short-covering BUT ALSO to bigger and faster falls.

(Not guaranteed and not a recommendation - weak stocks in weakening sub-industries may be better shorts than high-flyers.)

STOCK DETAIL (EDUCATIONAL PURPOSES ONLY/NOT FINANCIAL ADVICE)										1 week 10/12/23 to 10/19/23									
Sub-Industry	Ticker	Company	ID1	ID2	% Chg	ID3	Status	9Weakest	8VWeak	7Weaker	6Weak	5Avg	4Strong	3Stronger	2VStrong	1Strongest			
COMPUTER SOFTWARE & SERVICES - Application Softw RFD	RaplID7 Inc		15-59-99		21%	4%	13%	1Strongest											
COMPUTER SOFTWARE & SERVICES - Application Softw VAD	Yalla Group Ltd		15-59-99		6%	2%	13%	1Strongest											
COMPUTER SOFTWARE & SERVICES - Application Softw ESTC	Elastic NV		15-59-99		27%	2%	29%	1Strongest											
COMPUTER SOFTWARE & SERVICES - Application Softw QLYS	Qualys Inc		15-59-99		98%	1%	24%	1Strongest											
COMPUTER SOFTWARE & SERVICES - Application Softw VERX	Vertex Inc		15-59-99		48%	1%	22%	1Strongest											
COMPUTER SOFTWARE & SERVICES - Application Softw APPF	AppFolio Inc		15-59-99		91%	1%	21%	1Strongest											
COMPUTER SOFTWARE & SERVICES - Application Softw ARCE	Arco Platform Limited		15-59-99		11%	0%	1%	9Weakest											
COMPUTER SOFTWARE & SERVICES - Application Softw AVPT	AvePoint Inc		15-59-99		28%	0%	34%	1Strongest											
COMPUTER SOFTWARE & SERVICES - Application Softw SPLK	Splunk Inc		15-59-99		51%	0%	41%	1Strongest											
COMPUTER SOFTWARE & SERVICES - Application Softw MSFT	Microsoft Corp		15-59-99		89%	0%	10%	1Strongest											
COMPUTER SOFTWARE & SERVICES - Application Softw DT	Dynatrace Inc		15-59-99		49%	0%	4%	1Strongest											
COMPUTER SOFTWARE & SERVICES - Application Softw ADOBE	Adobe Systems Inc		15-59-99		71%	-1%	27%	1Strongest											
COMPUTER SOFTWARE & SERVICES - Application Softw CRWD	CrowdStrike Holdings Inc		15-59-99		58%	-2%	32%	1Strongest											
COMPUTER SOFTWARE & SERVICES - Application Softw CDNS	Cadence Design Systems		15-59-99		96%	-3%	13%	1Strongest											
COMPUTER SOFTWARE & SERVICES - Application Softw BSY	Bentley Systems Inc		15-59-99		54%	-3%	11%	1Strongest											
COMPUTER SOFTWARE & SERVICES - Application Softw SCWX	SecureWorks Corp. Class A		99-59-99		3%	4%	-19%	9Weakest	←-SCWX										
COMPUTER SOFTWARE & SERVICES - Application Softw PUBM	Publishers Inc		99-59-99		6%	2%	-32%	9Weakest											
COMPUTER SOFTWARE & SERVICES - Application Softw DOCU	DocuSign Inc		99-59-99		0%	2%	-22%	9Weakest											
COMPUTER SOFTWARE & SERVICES - Application Softw MGIC	Magi Software Enterprises Ltd		99-59-99		26%	1%	-17%	9Weakest											
COMPUTER SOFTWARE & SERVICES - Application Softw FINV	Five9 Inc		99-59-99		10%	0%	-12%	9Weakest											
COMPUTER SOFTWARE & SERVICES - Application Softw BCOV	Brightcove Inc.		99-59-99		0%	0%	-32%	9Weakest											
COMPUTER SOFTWARE & SERVICES - Application Softw PUBM	Publishers Inc		99-59-99		1%	-1%	-19%	9Weakest											
COMPUTER SOFTWARE & SERVICES - Application Softw PD	PagerDuty Inc		99-59-99		17%	-1%	-24%	9Weakest											
COMPUTER SOFTWARE & SERVICES - Application Softw PAYC	Payscom Software Inc		99-59-99		32%	-1%	-11%	9Weakest											
COMPUTER SOFTWARE & SERVICES - Application Softw MODN	Model N Inc.		99-59-99		29%	-2%	-28%	9Weakest											
COMPUTER SOFTWARE & SERVICES - Application Softw RING	RingCentral Inc.		99-59-99		1%	-2%	-13%	9Weakest											
COMPUTER SOFTWARE & SERVICES - Application Softw DORM	DORM Inc		99-59-99		1%	0%	3%	9Weakest											
COMPUTER SOFTWARE & SERVICES - Application Softw AGYS	Agilysys Inc		99-59-99		72%	-2%	-11%	9Weakest											
COMPUTER SOFTWARE & SERVICES - Application Softw SQ	Block Inc		99-59-99		2%	-3%	-32%	9Weakest											
COMPUTER SOFTWARE & SERVICES - Application Softw EVBG	Everbridge		99-59-99		0%	-3%	-28%	9Weakest											
COMPUTER SOFTWARE & SERVICES - Application Softw APPS	Digital Turbine Inc		99-59-99		4%	-3%	-50%	9Weakest											
COMPUTER SOFTWARE & SERVICES - Application Softw SFTI	ShotSpotter Inc		99-59-99		0%	5%	4%	9Weakest											
COMPUTER SOFTWARE & SERVICES - Application Softw LYFT	Lyft		99-59-99		3%	-5%	-8%	9Weakest	←-LYFT										
COMPUTER SOFTWARE & SERVICES - Application Softw SHLS	Shoals Technologies Group Inc		99-59-99		18%	-9%	-33%	9Weakest											
COMPUTER SOFTWARE & SERVICES - Application Softw CRNC	Cerence Inc		99-59-99		2%	-9%	-36%	9Weakest											
COMPUTER SOFTWARE & SERVICES - Application Softw LAZR	Luminar Technologies Inc		99-59-99		0%	11%	-42%	9Weakest											
COMPUTER SOFTWARE & SERVICES - Application Softw MNGI	Magi Software Enterprises Ltd		99-59-99		2%	-1%	-29%	9Weakest											
COMPUTER SOFTWARE & SERVICES - Business Softwar PCYG	Park City Group Inc		11-65-99		93%	6%	26%	1Strongest	←-PLTK										
COMPUTER SOFTWARE & SERVICES - Business Softwar OKTA	Okta Inc Class A		15-65-99		16%	1%	12%	1Strongest											
COMPUTER SOFTWARE & SERVICES - Business Softwar ZS	Zscaler Inc		15-65-99		39%	-1%	27%	1Strongest											
COMPUTER SOFTWARE & SERVICES - Business Softwar GWRE	Guidewire Software Inc.		15-65-99		46%	-1%	13%	1Strongest											
COMPUTER SOFTWARE & SERVICES - Business Softwar DELL	Dell Technologies Inc		15-65-99		93%	1%	3%	1Strongest											
COMPUTER SOFTWARE & SERVICES - Business Softwar NTKX	Nutanix Inc		15-65-99		58%	-5%	27%	1Strongest											
COMPUTER SOFTWARE & SERVICES - Business Softwar ETWO	Ezopen Parent Holdings Inc		99-65-99		7%	22%	-43%	9Weakest											
COMPUTER SOFTWARE & SERVICES - Business Softwar IIVV	i3 Verticals Inc		99-65-99		28%	1%	-16%	9Weakest											
COMPUTER SOFTWARE & SERVICES - Business Softwar JHRJ	Jack Henry & Associates		99-65-99		20%	1%	-9%	9Weakest											
COMPUTER SOFTWARE & SERVICES - Business Softwar DOKX	Amidos Ltd		99-65-99		65%	1%	12%	9Weakest											
COMPUTER SOFTWARE & SERVICES - Business Softwar YEXT	Yext		99-65-99		10%	0%	-28%	9Weakest											
COMPUTER SOFTWARE & SERVICES - Business Softwar EGAN	eGain Corp		99-65-99		8%	0%	-16%	9Weakest											
COMPUTER SOFTWARE & SERVICES - Business Softwar CSGS	CSG Systems Internat Inc		99-65-99		54%	0%	-4%	9Weakest											
COMPUTER SOFTWARE & SERVICES - Business Softwar ASUR	Asure Software Inc		99-65-99		29%	-1%	-31%	9Weakest											
COMPUTER SOFTWARE & SERVICES - Business Softwar BAND	Bandwidth Inc		99-65-99		2%	-2%	-3%	9Weakest											
COMPUTER SOFTWARE & SERVICES - Business Softwar DDON	DigitalOcean Holdings Inc		99-65-99		1%	-2%	-32%	9Weakest											
COMPUTER SOFTWARE & SERVICES - Business Softwar SSNC	SS&C Technologies Holdings Inc		99-65-99		33%	-2%	-11%	9Weakest	←-SSNC										
COMPUTER SOFTWARE & SERVICES - Business Softwar PRFT	Perforce Inc		99-65-99		27%	-4%	-20%	9Weakest											
COMPUTER SOFTWARE & SERVICES - Business Softwar VRNT	Verint Systems Inc		99-65-99		8%	-4%	-41%	9Weakest											
COMPUTER SOFTWARE & SERVICES - Business Softwar PADS	PagSeguro Digital Ltd		99-65-99		0%	5%	-17%	9Weakest											
COMPUTER SOFTWARE & SERVICES - Business Softwar ACCD	Accolade Inc		99-65-99		3%	-8%	-45%	9Weakest											
COMPUTER SOFTWARE & SERVICES - Business Softwar EBIX	Ebiz Inc		99-65-99		0%	-9%	-66%	9Weakest											
COMPUTER SOFTWARE & SERVICES - Business Softwar NTCT	Netscout Systems Inc		99-65-99		15%	-14%	-22%	9Weakest											
COMPUTER SOFTWARE & SERVICES - Healthcare Inform HIQY	HealthEquity Inc		15-69-99		71%	1%	21%	1Strongest											
COMPUTER SOFTWARE & SERVICES - Healthcare Inform NKGN	NorGen Healthcare Inc		15-69-99		800%	0%	31%	1Strongest											
COMPUTER SOFTWARE & SERVICES - Healthcare Inform TDOD	Teladoc Health Inc		99-69-99		0%	-2%	-26%	9Weakest											
COMPUTER SOFTWARE & SERVICES - Healthcare Inform EVH	Evolent Health Inc		99-69-99		64%	-4%	-12%	9Weakest	←-EVH										
COMPUTER SOFTWARE & SERVICES - Healthcare Inform HCAT	Health Catalyst Inc		99-69-99		3%	-6%	-32%	9Weakest											
COMPUTER SOFTWARE & SERVICES - Healthcare Inform CPSI	Computer Programs & Systems		99-69-99		0%	-9%	-43%	9Weakest											
COMPUTER SOFTWARE & SERVICES - Information & Dv FDS	Factset Research Systems Inc		15-59-99		82%	-2%	5%	1Strongest											
COMPUTER SOFTWARE & SERVICES - Information & Dv STEM	Stem Inc		99-59-99		0%	-7%	-41%	9Weakest											
COMPUTER SOFTWARE & SERVICES - Information Tech VRNS	Veronis Systems Inc		11-51-99		30%	10%	21%	1Strongest											
COMPUTER SOFTWARE & SERVICES - Information Tech CYBR	CyberArk Software Ltd		15-51-99		76%	2%	13%	1Strongest											
COMPUTER SOFTWARE & SERVICES - Information Tech PSN	Parsons Corporation		15-51-99		100%	0%	20%	1Strongest											
COMPUTER SOFTWARE & SERVICES - Information Tech GARMR	Gartner Inc		15-51-99		93%	1%	1%	1Strongest											
COMPUTER SOFTWARE & SERVICES - Information Tech TASK	TaskUs Inc		99-51-99		1%	5%	-33%	9Weakest											
COMPUTER SOFTWARE & SERVICES - Information Tech TWOU	ZU Inc		99-51-99		0%	0%	-57%	9Weakest											
COMPUTER SOFTWARE & SERVICES - Information Tech CRCT	Critic Inc		99-51-99		6%	0%	-21%	9Weakest											
COMPUTER SOFTWARE & SERVICES - Information Tech FIS	Fidelity National Information Services Inc		99-51-99		2%	0%	-12%	9Weakest											
COMPUTER SOFTWARE & SERVICES - Information Tech RADWR	Radware Ltd		99-51-99		1%	-1%	-16%	9Weakest	←-RDWR										
COMPUTER SOFTWARE & SERVICES - Information Tech BOX	Box Inc		99-51-99		61%	-3%	-14%	9Weakest											
COMPUTER SOFTWARE & SERVICES - Information Tech EPAM	EPAM Systems Inc.		99-51-99		17%	-3%	-15%	9Weakest	←-EPAM										
COMPUTER SOFTWARE & SERVICES - Information Tech UIS	Unisys Corp		99-51-99		0%	-9%	-33%	9Weakest											
COMPUTER SOFTWARE & SERVICES - Multimedia & Giv INSE	Inspired Entertainment Inc		99-51-99		61%	-5%	-20%	9Weakest											
COMPUTER SOFTWARE & SERVICES - Security Software VERX	VeriSign Inc		15-41-99		86%	1%	5%	1Strongest											
COMPUTER SOFTWARE & SERVICES - Security Software PLTR	Palantir Technologies Inc		11-11-99		34%	-5%	-41%	1Strongest											
COMPUTER SOFTWARE & SERVICES - Security Software OSPN	OneSpan		99-41-99		3%	-5%	-35%	9Weakest											
COMPUTER SOFTWARE & SERVICES - Technical & Syste SCSC	ScanSource Inc		15-59-99		67%	-2%	0%	1Strongest											
COMPUTER SOFTWARE & SERVICES - Technical & Syste ACIW	Aci Worldwide Inc		99-59-99		6%	4%	-12%	9Weakest											
COMPUTER SOFTWARE & SERVICES - Technical & Syste CCRD	CoreCard Corporation		99-59-99		6%	-3%	-25%	9Weakest											

Strongest to Weakest stocks ratio is 31:56 (16% and 28% of total) 10/12/23 to 10/19/23.

Green Highlight: Strengthened

Red Highlight: Weakened

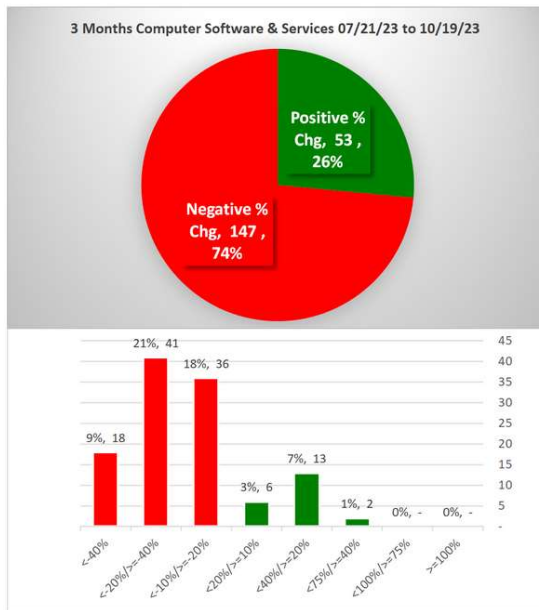
No Highlight: Unchanged

4

October 19

3. STRENGTH BY LOOKBACK PERIOD (with Best/Worst stocks)

3A. Lookback 3 Months



PERI	07/21/23	10/19/23	% Chg	Company	Sub-Industry
PERI	07/21/23	10/19/23	-23%	Perion Network Ltd	COMPUTER SOFTWARE & SERVICES - Business Software & Services
NTCT	07/21/23	10/19/23	-23%	Netscout Systems Inc	COMPUTER SOFTWARE & SERVICES - Business Software & Services
BCOV	07/21/23	10/19/23	-24%	Brightcove Inc.	COMPUTER SOFTWARE & SERVICES - Application Software
PAYC	07/21/23	10/19/23	-24%	Paycom Software Inc	COMPUTER SOFTWARE & SERVICES - Application Software
KC	07/21/23	10/19/23	-25%	Kingsoft Cloud Holdings	COMPUTER SOFTWARE & SERVICES - Application Software
ZUO	07/21/23	10/19/23	-25%	Zuora Inc	COMPUTER SOFTWARE & SERVICES - Business Software & Services
PEGA	07/21/23	10/19/23	-25%	Pegasystems Inc	COMPUTER SOFTWARE & SERVICES - Business Software & Services
FTNT	07/21/23	10/19/23	-26%	Fortinet Incorporated	COMPUTER SOFTWARE & SERVICES - Application Software
DXC	07/21/23	10/19/23	-26%	DXC Technology Company	COMPUTER SOFTWARE & SERVICES - Information Technology Services
PAGS	07/21/23	10/19/23	-26%	PagSeguro Digital Ltd	COMPUTER SOFTWARE & SERVICES - Business Software & Services
SE	07/21/23	10/19/23	-26%	Sea Limited	COMPUTER SOFTWARE & SERVICES - Multimedia & Graphics Software
TASK	07/21/23	10/19/23	-26%	TaskUs Inc	COMPUTER SOFTWARE & SERVICES - Information Technology Services
COIN	07/21/23	10/19/23	-27%	Coinbase Global Inc	COMPUTER SOFTWARE & SERVICES - Application Software
FIVN	07/21/23	10/19/23	-28%	Five9 Inc	COMPUTER SOFTWARE & SERVICES - Application Software
BAND	07/21/23	10/19/23	-29%	Bandwidth Inc	COMPUTER SOFTWARE & SERVICES - Business Software & Services
RNG	07/21/23	10/19/23	-31%	RingCentral Inc.	COMPUTER SOFTWARE & SERVICES - Application Software
PLTK	07/21/23	10/19/23	-31%	Playtika Holding Corp	COMPUTER SOFTWARE & SERVICES - Application Software
DV	07/21/23	10/19/23	-32%	DoubleVerify Holdings Inc	COMPUTER SOFTWARE & SERVICES - Application Software
MODN	07/21/23	10/19/23	-32%	Model N Inc.	COMPUTER SOFTWARE & SERVICES - Application Software
PDFS	07/21/23	10/19/23	-33%	Pdf Solutions	COMPUTER SOFTWARE & SERVICES - Technical & System Software
SSTI	07/21/23	10/19/23	-33%	ShotSpotter Inc	COMPUTER SOFTWARE & SERVICES - Application Software
AI	07/21/23	10/19/23	-34%	C3.AI Inc	COMPUTER SOFTWARE & SERVICES - Application Software
CRCT	07/21/23	10/19/23	-34%	Cricut Inc	COMPUTER SOFTWARE & SERVICES - Information Technology Services
EVBG	07/21/23	10/19/23	-34%	Everbridge	COMPUTER SOFTWARE & SERVICES - Application Software
CRNC	07/21/23	10/19/23	-34%	Cerence Inc	COMPUTER SOFTWARE & SERVICES - Application Software
OSPN	07/21/23	10/19/23	-35%	OneSpan	COMPUTER SOFTWARE & SERVICES - Security Software & Services
PUBM	07/21/23	10/19/23	-35%	PubMatic Inc	COMPUTER SOFTWARE & SERVICES - Application Software
VERI	07/21/23	10/19/23	-36%	Veritone Inc	COMPUTER SOFTWARE & SERVICES - Business Software & Services
YEKT	07/21/23	10/19/23	-36%	Yekt	COMPUTER SOFTWARE & SERVICES - Business Software & Services
HCAT	07/21/23	10/19/23	-37%	Health Catalyst Inc	COMPUTER SOFTWARE & SERVICES - Healthcare Information Service
ASUR	07/21/23	10/19/23	-38%	Asure Software Inc	COMPUTER SOFTWARE & SERVICES - Business Software & Services
ETWO	07/21/23	10/19/23	-39%	E2open Parent Holdings Inc	COMPUTER SOFTWARE & SERVICES - Business Software & Services
CLSK	07/21/23	10/19/23	-40%	Cleantalk Inc	COMPUTER SOFTWARE & SERVICES - Application Software
PRFT	07/21/23	10/19/23	-40%	Percipient Inc	COMPUTER SOFTWARE & SERVICES - Business Software & Services
OPRX	07/21/23	10/19/23	-41%	OptimizeRx Corporation	COMPUTER SOFTWARE & SERVICES - Healthcare Information Service
VYX	07/21/23	10/19/23	-42%	NCR Voyix Corporation	COMPUTER SOFTWARE & SERVICES - Information Technology Services
SQ	07/21/23	10/19/23	-42%	Block Inc	COMPUTER SOFTWARE & SERVICES - Application Software
SHLS	07/21/23	10/19/23	-42%	Shoals Technologies Group Inc	COMPUTER SOFTWARE & SERVICES - Application Software
CPSI	07/21/23	10/19/23	-44%	Computer Programs & Systems	COMPUTER SOFTWARE & SERVICES - Healthcare Information Service
TWOU	07/21/23	10/19/23	-45%	2U Inc	COMPUTER SOFTWARE & SERVICES - Information Technology Services
DOMO	07/21/23	10/19/23	-46%	Domo Inc	COMPUTER SOFTWARE & SERVICES - Application Software
VRNT	07/21/23	10/19/23	-46%	Verint Systems Inc	COMPUTER SOFTWARE & SERVICES - Business Software & Services
LAZR	07/21/23	10/19/23	-47%	Luminar Technologies Inc	COMPUTER SOFTWARE & SERVICES - Application Software
STEM	07/21/23	10/19/23	-47%	Stem Inc	COMPUTER SOFTWARE & SERVICES - Information & Delivery Service
UIS	07/21/23	10/19/23	-47%	Unisys Corp	COMPUTER SOFTWARE & SERVICES - Information Technology Services
APPS	07/21/23	10/19/23	-49%	Digital Turbine Inc	COMPUTER SOFTWARE & SERVICES - Application Software
ACCD	07/21/23	10/19/23	-50%	Accolade Inc	COMPUTER SOFTWARE & SERVICES - Business Software & Services
MGNI	07/21/23	10/19/23	-50%	Magnite Inc	COMPUTER SOFTWARE & SERVICES - Application Software
RIOT	07/21/23	10/19/23	-52%	Riot Blockchain Inc	COMPUTER SOFTWARE & SERVICES - Application Software
DOCN	07/21/23	10/19/23	-53%	DigitalOcean Holdings Inc	COMPUTER SOFTWARE & SERVICES - Business Software & Services
EBIX	07/21/23	10/19/23	-77%	Ebix Inc	COMPUTER SOFTWARE & SERVICES - Business Software & Services

15 stocks >+20% and 59 stocks <-20% (8% and 30% of total) 07/21/23 to 10/19/23.

3. STRENGTH BY LOOKBACK PERIOD (with Best/Worst stocks)

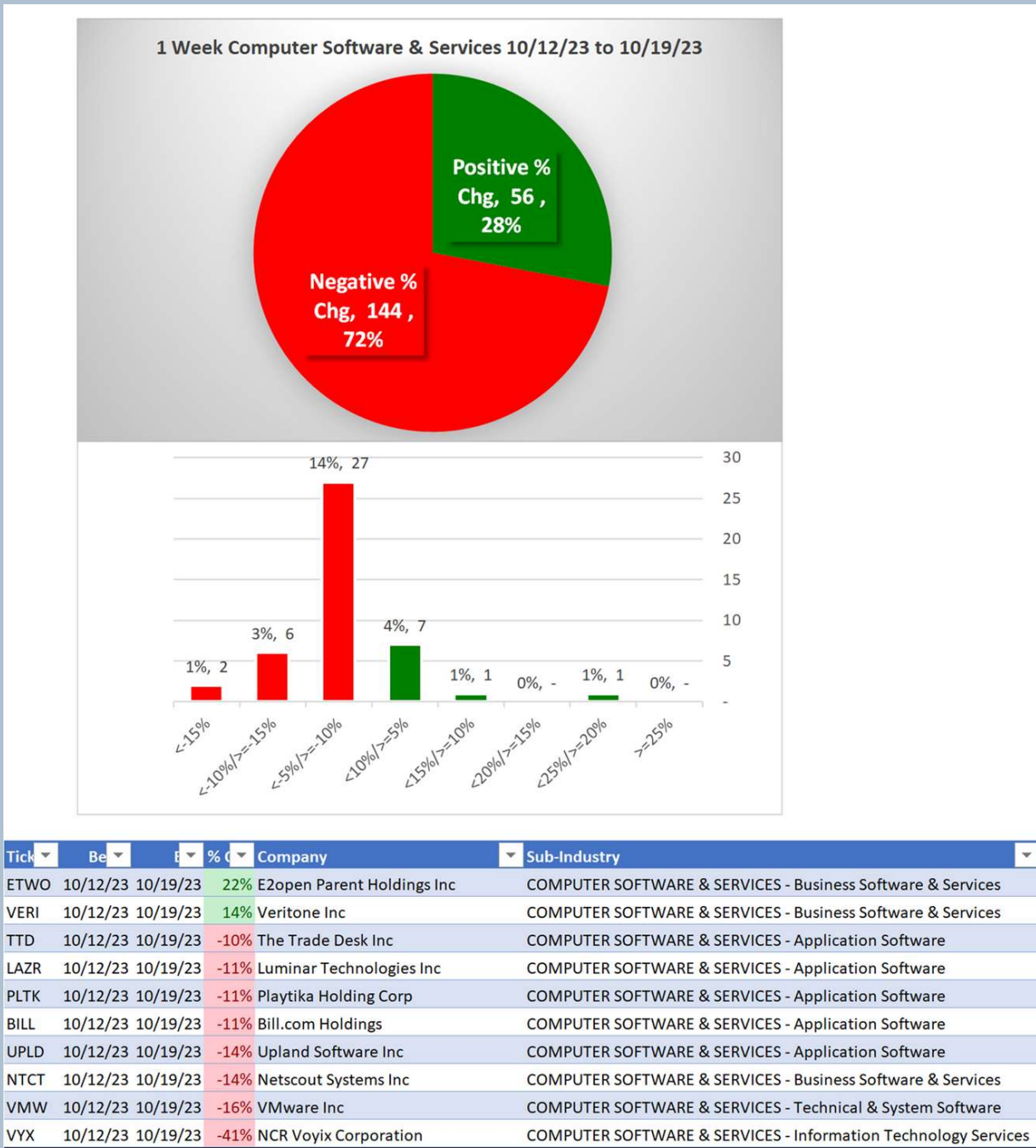
3B. Lookback 4 Weeks



12 stocks >+10% and 36 stocks <-10% (6% and 18% of total) 09/21/23 to 10/19/23.

3. STRENGTH BY LOOKBACK PERIOD (with Best/Worst stocks)

3C. Lookback 1 Week



2 stocks >+10% and 8 stocks <-10% (1% and 4% of total) 10/12/23 to 10/19/23.